

MASS BAY SAILING
2008
YEAR BOOK

www.massbaysailing.org

\$5.⁰⁰

HILL & LOWDEN, INC.

YACHT SALES & BROKERAGE

**J boat dealer for Massachusetts
and southern New Hampshire**



Hill & Lowden, Inc. offers the full range of new J Boat performance sailing yachts. We also have numerous pre-owned brokerage listings, including quality cruising sailboats, racing sailboats, and a variety of powerboats ranging from runabouts to luxury cabin cruisers. Whether you are a sailor or power boater, we will help you find the boat of your dreams and/or expedite the sale of your current vessel. We look forward to working with you.



HILL & LOWDEN, INC. IS CONTINUOUSLY SEEKING PRE-OWNED YACHT LISTINGS. GIVE US A CALL SO WE CAN DISCUSS THE SALE OF YOUR BOAT



www.Hilllowden.com

6 Cliff Street, Marblehead, MA 01945
Phone: 781-631-3313 Fax: 781-631-3533

Table of Contents

| <i>INFORMATION</i> | |
|--|-------------------|
| Letter to Skippers | 1 |
| 2008 Offshore Racing Schedule | 2 |
| 2008 Officers and Executive Committee | 3 |
| 2008 Mass Bay Sailing Delegates | 4 |
| Event Sponsoring Organizations | 5 |
| 2008 Season Championship | 6 |
| 2008 Pursuit race Championship | 7 |
| Salem Bay PHRF Grand Slam Series | 8 |
| PHRF Marblehead Qualifiers | 9 |
| 2008 J105 Mass Bay Championship Series | 10 |
| <i>PHRF EVENTS</i> | |
| Constitution YC Wednesday Evening Races | 11 |
| BYC Wednesday Evening Races | 12 |
| Boston Harbor Wednesday PHRF | 14 |
| JYC Thursday Night Racing | 15 |
| BYC Memorial Day Weekend Regatta | 16 |
| EYC Lambert Ocean Race | 17 |
| CYC Summerset Regatta | 18 |
| Constitution Spring Regatta | 19 |
| Hospice of the North Shore | 20 |
| Solstice Regatta | 21 |
| Patton Bowl Regatta | 22 |
| Constitution Cup | 23 |
| EYC Annual Regatta | 24 |
| Scorpion Bowl | 25 |
| Corinthian 200/Chapman Bowl | 26 |
| BYC Beringer Bowl Overnight Race | 28 |
| Crocker Race | 30 |
| Scituate Invitational | 31 |
| Down East Challenge 2008 | 32 |
| Make-A-Wish Regatta | 33 |
| CYC Summer Ocean Race | 34 |
| The Palmer's Cove Bowditch Race | 35 |
| Flip Flop Regatta | 38 |
| Hitchcock Trophy Regatta, Hingham YC | 39 |
| EYC Chandler Hovey Race | 40 |
| PHRF New England Championship Regatta | 41 |
| JFK Regatta | 42 |
| BYC Wednesdays Child Benefit Race | 43 |
| The Jubilee YC Regatta | 44 |
| Great Chase Race | 45 |
| BYC James R. Hodder Regatta | 46 |
| Constitution YC Fall Regatta | 47 |
| Chowder Cup, Eastern Yacht Sales | 48 |
| Manchester Fall Series | 49 |
| Boston Harbor Islands Pursuit Race | 50 |
| The JYC Phil Small Race | 51 |
| BYC Fall Regatta | 52 |
| <i>APPENDIX</i> | |
| General Sailing Instructions | 54 |
| Rinderle B Table, PHRF Fleet Splits | 59 |
| MBSA Standard Courses | 60 |
| MBSA Standard Rounding Marks | 62 |
| US SAILING Judges in Massachusetts, MBSA Appeals Committee | 64 |
| 2008 Double Handed Sailing | 66 |
| U.S. Men's & Women's Sailing Championship Quarter Finals | 67 |
| MBSA Junior Events | 68 |
| One Design Fleet Events | 69 |
| Marblehead One-Design Events | 71 |
| Mass Bay Entry Forms, 2008 Offshore Racing Schedule | 72 - 74 |
| U.S. Offshore Championship Lloyd Phoenix Trophy | inside back cover |

MEMBERSHIP FORM 2008

| | | |
|-------------------|---------------------|--|
| Name: First | Last | Email |
| Address (Street) | City/Town | (State/ZIP 9-dig) Phone |
| Yacht Club/Assoc. | US SAILING No. | Juniors; date of birth Member Category |
| Boat Name | Boat Design (C&C32) | Sail # Length Class/Fleet |

New Member: ☐ Renewing: ☐
Please check applicable box

Membership Categories & Dues: Please indicate your racing interest ☐ check applicable box

Offshore: ☐ \$20., *Senior One-Design: ☐ \$15, **Junior One Design ☐ \$10, Family: ☐ \$25

* Senior members: 18 years or older on January 1 of the current year
** Junior members: 17 years or younger on January 1st of the current year.

Signature Date

Mail this form together with a check or money order payable to:

*Mass Bay Sailing Association
c/o Walter Murphy
Po Box 544
Marblehead, MA 01945*

Once your application form is processed a new MBSA membership card will be mailed to you
Go to Mass Bay Sailing Web Site www.massbaysailing.org for further information



April, 2008

Dear Sailors:

Mass Bay Sailing's primary mission is promoting the sport of sailing. The offshore division promotes PHRF weekend and mid-week twilight racing from Cape Ann to Scituate. Race notices and sailing instructions for these events are contained in this book as well as lots of other useful information.

If you did not race last year, plan to enter a Wednesday or Thursday evening race. If you enjoyed racing mid-week last year, try a weekend race this year. Weekend races often are just a longer version of a weeknight race. Another popular choice is to enter one of the 6 pursuit races that are part of the MBSA Pursuit Race Championship. These are fun races where slower rated boats start first, with the object of having all boats to finish close together.

Racing is its own reward and you can't lose by entering a race or a regatta. During the racing season be sure to log on to www.massbaysailing.org and www.phrfne.org to check out what is happening on the racing scene, as well as to see how your competitors are doing in the season championships.

Congratulations to the following skippers who raced in the 2007 Mass Bay Sailing Championship events, and won their respective classes:

| | | | |
|-------------------------|---------------|--------------------|----------------------------------|
| Merriman Trophy | Class A | <i>KATABATIC</i> | Gordon Hall |
| President's Trophy | Class B | <i>GOLDENEYE</i> | Peter Engel |
| NE Ocean Racing Circuit | J 105 | <i>ACHEIVER V</i> | Jim Flanagan |
| Duplin Trophy | Class C | <i>ATLANTEA</i> | David Felsenthal & Alison Becker |
| PHRF Trophy | Class D | <i>BLIXTEN</i> | Bruce Baker |
| Vice President's Bowl | Class E | <i>PTERODACTYL</i> | Paul Smith |
| Doyle Trophy | Class F | <i>BLITZEN</i> | Brian Owen |
| Eclipse Trophy | Class G | <i>FACET</i> | Tom Tetrault |
| Bradford Trophy | Pursuit Class | <i>AKEEPAH</i> | Jody Graul |

| | | |
|------------------------|----------------|--------------|
| Rookie of the Year | <i>BLTIZEN</i> | Brian Owen |
| Competitor of the Year | <i>FACET</i> | Tom Tetrault |

COMPETE WITH YOUR FLEET !

Ken Adam
Tom Anderson
Co-Vice President's Offshore
Mass Bay Sailing Association

MASSACHUSETTS BAY SAILING ASSOCIATION

2008 Offshore Racing Schedule

| Date | North Shore | Other | Boston/Hingham/South Shore |
|--------------------|---|--------------------------------------|---|
| Sat., May 24 | BYC Mem. Weekend Regatta (2 races) M | | |
| Sun., May 25 | | | |
| Sat., May 31 | | | |
| Sun., June 1 | EYC Lambert Ocean Race M | | |
| Sat., June 7 | | | |
| Sun., June 8 | CYC Summerset Regatta M, S, Q, J (2 races) | | |
| Sat., June 14 | | | Constitution YC Spring Regatta (2+ races) |
| Sun., June 15 | CYC Hospice of the North Shore M, Q, J | | |
| Sat., June 21 | MYC Patton Bowl Regatta M, S (2 races) | | HBPHRF Solstice Regatta H, Q |
| Sun., June 22 | | | |
| Sat., June 28 | | | BHPHRF Constitution Cup (2 races) Q, J |
| Sun. June 29 | | | |
| Fri, July 4 | EYC Annual Regatta M, S, Q, J | | |
| Sat., July 5 | | | |
| Sun., July 6 | | | |
| Fri., July 11 | Corinthian 200 - Chapman Bowl | | O/N Q x1.25 ¹ |
| Sat., July 12 | | | HBPHRF Scorpion Bowl H, Q |
| Sun., July 13 | | | |
| Fri., July 18 | BYC Beringer Bowl O/N M, Q x 1.25 ¹ | | |
| Sat., July 19 | | Crocker QP | |
| Fri., July 25 | | Race Week/NOOD | |
| Sat., July 26 | | Race Week/NOOD Downeast Challenge | Scituate Invitational Q |
| Sun., July 27 | | Race Week/NOOD | |
| Sat., August 2 | | | CPYC Make-A-Wish Regatta QP |
| Sun., August 3 | CYC Summer M | | |
| Sat., August 9 | PCYC Bowditch Race M, S, Q | Flip Flop Regatta QP | |
| Sun, August 10 | | | |
| Sat., August 16 | | | HYC Hitchcock Trophy Regatta H, Q |
| Sun., August 17 | EYC Chandler Hovey Race M | | |
| Fri., August 22 | PHRF NE ² (racing divisions below 141) | | |
| Sat. August 23 | PHRF NE ² (racing & cruising) | | |
| Sun., August 24 | PHRF NE ² (racing & cruising) | | |
| Sat., August 30 | | | CPYC JFK Regatta (2 races) Q |
| Sun., August 31 | | | |
| Mon., Sept. 1 | BYC "Wednesday's Child" Regatta QP | | |
| Sat., Sept. 6 | JYC Regatta (2 races) M, S, Q, J | | Hull YC Great Chase Race QP |
| Sun., Sept. 7 | | | |
| Sat., Sept. 13 | BYC Hodder Regatta M, S | | Constitution YC Fall Regatta (2+ races) |
| Sun., Sept. 14 | | | |
| Sat., Sept. 20 | | | HBPHRF Chowder Cup (2 races) H, Q |
| Sun., Sept. 21 | MYC Fall Series (2 races) M, Q, J | | |
| Sat., Sept. 27 | | BH Islands Reg. QP | |
| Sun., Sept. 28 | JYC Phil Small Race M, Q | | |
| Sat., October 4 | BYC Fall Regatta M (2 races) | | |
| Sat, Nov. 22 | Mass Bay Sailing Annual Awards Dinner | | |
| Thur., Jan. 1, '08 | Constitution Yacht Club New Year's Day Race – Inner Boston Harbor | | |

M=Marblehead S=Salem Bay Q=MBSA Qualifier J=MBSA J105 Qualifier QP=MBSA Pursuit Qualifier H=Hingham Bay

¹While both overnight races are Qualifiers, the multiplier of 1.25 will only be applied to the higher score.

²The PHRF NE Championship is a qualifier for all classes. It is also an event in the Hingham Bay PHRF Governor's Cup.

MASS BAY SAILING ASSOCIATION

2008 OFFICERS AND EXECUTIVE COMMITTEE

| | | |
|----------------------------|---|--|
| President | David Felsenthal 32 Flint Street Marblehead, MA 01945 | (H) (781) 639-0417 (C) (781) 254-2685 (W) (781) 631-2600 mbsa@felsenthal.org |
| VP(s) Offshore | Ken Adam 1 Oak Ridge Road Littleton, MA 01460 | (H) (978) 486-3757 (C) (978) 618-2106 KenAdam@prodigy.net |
| | Tom Anderson 65 Jersey Street Marblehead, MA 01945 | (H) (781) 631-6681 (C) (617) 957-5889 tom@nonpareilracing.com |
| VP One Design | Kristen Feeley 3 Bel Air Road Hingham, MA 02043 | (H) (781) 749-2827 feeleyk@bsci.com |
| VP Juniors | Gordon Baird 27 Fort Hill Avenue Gloucester, MA 01930 | (H) (978) 283-0390 (C) (978) 430-7715 gordon@rampartsfarm.com |
| | Lynn Conway 56 Jerusalem Road Cohasset, MA 02025 | (H) (781) 383-6695 (C) (617) 694-9773 jlconway@aol.com |
| Secretary | Melissa Verrochi 46 Cranch Street Quincy, MA 02169 | (C) (781) 956-2832 mrock22@hotmail.com |
| Treasurer | Walter Murphy 10 Beach Street Marblehead, MA 01945 | (H) (781) 639-1306 wj.murphy@verizon.net |
| EXECUTIVE COMMITTEE | | |
| | Mike Gahan 105 Sunnyside Avenue Winthrop, MA 02152 | (H) (617) 846-1776 (C) (617) 212-5681 metropolitanmeat@aol.com |
| | Jody Graul 65A Bass Point Road Nahant, MA 01908 | (H) (781) 598-0222 (C) (617) 816-1900 jfgraul@comcast.net |
| | Bill Zimmernan PO Box 130123 Boston, MA 02113 | (H) (617) 413-2679 deigratia367@yahoo.com |

2008 MASSACHUSETTS BAY SAILING DELEGATES

| <u>Organization</u> | <u>Name</u> | <u>Address</u> | <u>Phone</u> |
|------------------------------------|---|--|--|
| Boston Harbor PHRF | Tim May | 44 Jean Street, Framingham 02170 tmay.aspencross@jhnetwork.com | H (508) 898-2810 W (508) 898-2810 |
| Boston Harbor PHRF | Dick Hyde | 556 Trapelo Rd., Belmont 02178 dickhyde@rwwhyde.com | H (617) 546 5047 W (617) 489-6470 |
| Boston Yacht Club | Geoff Smith | 39 Rice Spring Lane, Wayland 01778 gesmith1000@comcast.net | H (508) 358-7542 |
| Boston Yacht Club | Rich Graczyk | 49 Cedar St., Lynn 01905-1608 rgraczyk2002@yahoo.com | H (781) 599-7015 W (978) 836-9150 |
| Constitution Yacht Club | Ed Frenette | 1000 Mass Ave., Cambridge 02138 e_frenette@smma.com | W (617) 520-9213 |
| Corinthian Yacht Club | Ken Adam | One Oak Ridge Rd., Littleton 01460 kenadam@prodigy.net | H (978) 486-3757 W (978) 618-2106 |
| Corinthian Yacht Club | Jim Whipple jimwhipple@aol.com | 145 Pinckney St., Boston 02114 | H (617)720-4262 |
| Cottage Park YC | Ernie Hardy | 47 Bartlett Parkway Winthrop 02152 | H (617) 846-6320 |
| Eastern Yacht Club | Susie Schneider | 8 Orne Street, Marblehead 01945 sschneider@towerschool.org | C (781)749-0373 W (781) 631-5800 x124 |
| Eastern Yacht Club | Gordon Vineyard | 39 Kingsbury Rd. Chestnut Hill 02467 gvineyard@hawkesail.com | H (617) 277-6581 |
| Hingham Bay PHRF | David Nelson | 126 Trowbridge Circle, Stoughton dmch.nelson@verizon.net | H (781) 297-9236 W (401) 292-55 |
| | Darthea Collins | 26 Beach Road, Hingham 02043 industrialtech@comcast.net | H (781) 749-0373 |
| Mass Bay Sailing Past President | Bill Collins | 26 Beach Road, Hingham 02043 industrialtech@comcast.net | H (781) 749-0373 C (617) 877-0382 |
| Hospice Regatta | Vern Polidoro | 161 West Shore Dr., Marblehead 01945 vernon.polidoro@ae.ge.com | H (781) 631-2851 W (781) 594-1588 |
| Hull YC | Bill Bradford | 16 Douglas Ave., Hull 02045 bradford2@comcast.net | H (781) 925-3674 W (617) 886-1034 |
| Jubilee Yacht Club | Bob Maxwell | 3 Otterson Rd., Londonderry, NH 03053 | H (603) 434-8712 |
| Manchester YC | Paul McMahon | 29 Central St. #2 Manchester 01944 pmmcmahon2003@yahoo.com | H (978) 526-8945 W (781) 290-0273 |
| Marblehead PHRF | Phil DiCarlo | 6 Garnet Rd., Marblehead 01945 pedicarlo@yahoo.com | H (781) 639-7898 W (978) 927-8300 |
| Mass Bay Sailing Offshore VPs | Ken Adam | One Oak Ridge Rd., Littleton 01460 kenadam@prodigy.net | H (978) 486-3757 C (978) 618-2106 |
| | Tom Anderson | 65 Jersey St., Marblehead 01945 tom@nonpareilracing.com | H (781) 631-6681 W (617) 957-5889 |

DELEGATES continued

| <u>Organization</u> | <u>Name</u> | <u>Address</u> | <u>Phone</u> |
|----------------------|-----------------|--|------------------|
| Palmers Cove YC | John Devine | 14 Fay St., Lynn 01902 | H (781) 592-3669 |
| Salem PHRF | | wetkeel@aol.com | W (781) 594-3225 |
| PHRF-NE Secretary | Walter Murphy | 10 Beach St., Marblehead 01945 | H (781) 631-8698 |
| PHRF-NE Championship | | http://www.phrfne.org , wj.murphy@verizon.net | B (781) 639-1306 |
| Scituate Sailing | Jim Kwiatkowski | 216 Fairways Edge Dr. Marshfield 02050 H | H (781) 837-3414 |
| | | jkkwk@adelphia.net | W (781) 826-4396 |
| Scituate Harbor YC | Preston Hoffman | phoffman@aebarnes.com | |
| | Steve Lilly | slilly@comcast.net | |

EVENT SPONSORING ORGANIZATIONS

| | | |
|----------------------------|---|----------------|
| Boston Yacht Club | One Front Street, Marblehead 01945 http://www.bostonyc.org | (781) 631-3100 |
| Constitution Yacht Club | 28 Constitution Rd, Boston 02129 http://www.cycboston.org/ | (781) 395-9872 |
| Corinthian Yacht Club | Corinthian Lane, Marblehead 01945 http://www.corinthianyc.org/ | (781)-631-0005 |
| Cottage Park Yacht Club | Orlando Ave, Winthrop, MA 02152 http://www.cpyc.org/ | (617) 846-2792 |
| Eastern Yacht Club | 32 Foster Street, Marblehead 01945 http://www.easternyc.org/ | (781) 631-1400 |
| Hingham Yacht Club | 211 Downer Avenue, Hingham, MA 02043 http://www.hinghamyachtclub.com/ | (781) 749-9779 |
| Hull Yacht Club | Fitzpatrick Way, Hull, MA 02045 http://www.hullyc.org/ | (781) 925-9739 |
| Jubilee Yacht Club | P.O. Box 104, Beverly, MA 01915 http://www.jubileeyc.net/ | (978) 922-9611 |
| Manchester Yacht Club | 15 Tucks Point Road http://manchesteryachtclub.org/ | (978) 526-4595 |
| Mass Bay Sailing | 10 Beach St., Marblehead, MA 01945 http://www.massbaysailing.org | (781) 749-0373 |
| Palmer Cove Yacht Club | 74 Leavitt Street, Salem, MA 01970 http://www.pcycsalem.com/ | (978) 744-9722 |
| PHRF-NE | 10 Beach St., Marblehead 01945 http://www.phrfne.org | (781) 631-8698 |
| Scituate Harbor Yacht Club | 62 Jericho Road, Scituate, MA 02066 http://www.shyc.net | (781) 545-9700 |
| Scituate Sailing | http://www.scituatesailing.com | |



2008 SEASON CHAMPIONSHIP

As part of its mission Mass Bay Sailing Association proudly sponsors the 2008 Season Championship for five racing (spinnaker) and two cruising (non spinnaker) classes based upon PHRF handicap ratings assigned by PHRF-New England as follows:

Racing Classes

| | |
|---------|------------|
| Class A | Up to 65 |
| Class B | 66 - 100 |
| Class C | 101 - 140 |
| Class D | 141 - 170 |
| Class E | 171 and up |

Cruising Classes

| | |
|---------|------------|
| Class F | Up to 155 |
| Class G | 156 and up |

Trophies, Scoring and Qualification for all Classes

Trophies are awarded on November 22, 2008 at the annual awards dinner to the first, second and third place winners in the above classes based upon a qualifying yacht's highest point score in its best six events as designated by a "Q" on Mass Bay Offshore Racing Schedule. Points are awarded to each yacht using the Mass Bay Offshore Scoring System (Rinderle B). All events will be scored based upon the yacht's finishing place in the event as reported by the Organizing Authority. While both the Corinthian 200-Chapman Bowl and Beringer Bowl overnight races are qualifiers, a multiplier of 1.25 will only be applied to the higher score if both events are participated in. Qualification for the Championship requires:

1. Paid membership of Mass Bay Sailing Association for 2008;
2. Starting in at least four qualifying events* designated by "Q"; and
3. With the exception of Scituate yachts, starting in at least one "Q" event from both the North Shore and the Boston/Hingham/South Shore columns.

**Note that in the 2008 Offshore Racing Schedule that the PHRF NE Championships is a North Shore column event and a single qualifying event for all classes.*

"COMPETE WITH YOUR FLEET"



Mass Bay Sailing 2008 Pursuit Race Championship

To recognize the increased popularity and participation in pursuit races in Massachusetts Bay, prizes / trophies will be awarded at the annual dinner to the top three finishers in the best four out of the following six pursuit races:

| <u>Date</u> | <u>Event</u> | <u>Location / Host Club</u> |
|----------------|-------------------------------|-----------------------------|
| July 19, 2008 | S. S. Crocker Memorial | Manchester, MA |
| Aug. 2, 2008 | Make-A-Wish Regatta | Cottage Park YC |
| Aug. 9, 2008 | Flip Flop Regatta | The Ally Foundation |
| Sept. 1, 2008 | Wednesday's Child Regatta | Boston Yacht Club |
| Sept. 6, 2008 | Great Chase Race | Hull Yacht Club |
| Sept. 27, 2008 | Boston Harbor Islands Regatta | Island Alliance |

High point scoring for a boat's highest four events will be used. Each event will be scored as follows:

Each boat gets 10 points for starting the race and 1 point for each boat it beats in its class.

Boats scored DNF or OCS receive their starting points only. Boats scored DNS or DNC receive no points.

In order to compete for prizes / trophies in the 2008 Pursuit Race Championship, each skipper / boat must be a current member of Mass Bay Sailing and must have a 2008 PHRF NE rating certificate¹. Total points will be accumulated for each boat based upon its finish in each event regardless of class. Boats must enter each regatta individually, complying with the rules and instructions issued by each Organizing Authority.

¹ Boats that may not fully comply with offshore requirements such as lifelines, self bailing cockpits, installed heads, etc. may apply for and receive an "unofficial" PHRF New England certificate. Examples of boats that are issued unofficial certificates include J 22, Pearson Ensign, Alerion 28, etc. For more information, skippers should contact their area fleet governor / handicapper appearing on <http://www.phrfne.org>.

2008 SALEM BAY PHRF GRAND SLAM SERIES

The six, yacht clubs that sponsor Ocean Racing events in the Salem Bay area are pleased to announce annual Salem Bay Grand Slam Series. This format is designed to encourage boats from all six yacht clubs to compete in a season series for both individual honors and their respective Yacht Club. Each of the six sponsoring yacht clubs has designated one regatta to become a Grand Slam event. The race schedule is as follows:

| | |
|--------------------|--------------|
| CYC SUMMERSET | SUN, JUNE 8 |
| MYC PATTON BOWL | SUN, JUNE 22 |
| EYC ANNUAL REGATTA | FRI, JULY 4 |
| PCYC BOWDITCH | SAT, AUG 9 |
| JYC REGATTA WKND | SAT, SEPT 6 |
| BYC HODDER RACE | SUN, SEPT 13 |

TROPHIES:

In addition to the trophies being awarded for each individual event, overall keeper trophies will be awarded in each of six classes on the basis of a yacht's five best scores (Mass Bay Sailing-ORC scoring) in the qualifying races. **For 2008 each RC will determine the number of races to be run for their regatta. We will count each race individually towards the season trophy and will continue to use the rinderle point system for scoring.**

A **perpetual trophy** will be awarded to and displayed in the Salem Bay area Yacht Club whose members accumulate the highest aggregate point total, based on each club's five best overall scoring yachts, regardless of class. The names of each class winner will be inscribed on the perpetual trophy.

Season trophies will be presented at fall awards meeting for PHRF Marblehead. Any yacht with a valid 2008 PHRF-NE rating may qualify.

Class breaks for the 2008 race calendar are as follows:

A: up to 65; B: 66-100; C: 101-140; D: 141-up to 170; E 171+ F: Cruising to 155; G: Cruising 156+

PHRF MARBLEHEAD
Box 352 Marblehead Ma 01945
2008 Qualifying Races

CUT THROAT SHOAL SERIES

| | | |
|------------|-----------------------------|---------------------|
| BYC | Memorial Day Regatta | Sat, May 24 |
| EYC | Lambert Ocean Race | Sun, June 1 |
| CYC | Summerset | Sun, June 8 |
| CYC | Hospice Regatta | Sun, June 15 |
| MYC | Patton Bowl | Sun, June 22 |
| EYC | Annual Regatta | FRI, July 4 |
| BYC | Beringer Bowl | Fri, July 18 |

CONEY LEDGE SERIES

| | | |
|-------------|----------------------------|----------------------|
| CYC | Summer | Sun, Aug 3 |
| PCYC | Bowditch Race | Sat. Aug 9 |
| EYC | Chandler Hovey | Sun, Aug 17 |
| JYC | Regatta Weekend | Sat, Sept 6 |
| BYC | Hodder Regatta | Sat, Sept 13 |
| MYC | Manchester Fall | Sun, Sept 21 |
| JYC | Phil Small Memorial | Sun, Sept. 28 |
| BYC | Fall Regatta | Sat, Oct 4 |

The best five races will be scored for each series.

Overall: Best 10 races scored.

Mass Bay Sailing Offshore scoring system will be used. If you select the Beringer overnight race you will be scored 1.10 X Rinderle. . **New for 2008, each RC will determine the number of races to be run for their regatta. We will count each race individually towards the season trophy and will continue to use the rinderle point system for scoring.**

RATING CLASSES: A: up to 65; B: 66-100; C: 101-140; D: 141-170; E: 171+ G: Cruising 0-155; F: Cruising 156+

MEMBERSHIP: Send \$50 with a completed rating form to the above address before the spring meeting. A late charge of \$5 will apply for any forms received after the spring meeting. The spring meeting is scheduled for April 16th, at the BYC starting at 7PM.



2008 J105 Mass Bay Championship Series

| | | |
|---------|----------|-------------------------|
| June 8 | Sunday | CYC Summerset Regatta |
| June 15 | Sunday | BYC Hospice Regatta |
| June 28 | Saturday | CPYC Constitution Cup |
| July 4 | Friday | EYC Annual Regatta |
| Sept 6 | Saturday | Jubilee YC Regatta |
| Sept 21 | Sunday | Manchester YC Fall Race |

The Low Point System will be used for scoring.

A boat's series score will be the sum of the best 80% of its individual race scores.

A boat is considered entered in this series if it participates in any series race.

Season Awards presented at the Mass Bay Sailing Annual Dinner, Saturday, November 22



Constitution Yacht Club

PHRF Wednesday Evening Boston Inner Harbor Races

THREE SERIES, SIX RACES PER SERIES

First series: 16 May – 20 June
Second series: 27 June – 8 August (no race on 4 July)
Third series: 15 August – 19 September

MEMBER ENTRY FEES:

Full Season: \$ 135.00
One Series: \$ 75.00
One Race: \$ 30.00

NON-MEMBER ENTRY FEES:

Full Season: \$ 185.00
One Series: \$ 90.00
One Race: \$ 35.00

(\$5 discount for US Sailing members, additional \$5 discount for MBSA members.)

ENTRIES & QUESTIONS TO:

Bill Copley, Fleet Captain
459 Massachusetts Avenue #3
Boston, MA 02118
617-921-0066, e-mail: wcopley@verizon.net

SAILING INSTRUCTIONS: Will be posted on the CYC web site www.cycboston.org. Also available by fax if requested, and from the RC Boat until 5 minutes prior to Warning.

STARTS: Evening Warning signals at 1830, start in the vicinity of the Boston Waterboat Marina mooring area south of Lewis Wharf.

COURSES: To be posted on the RC boat. Marks used will be government marks Fl G 4 sec "13", Fl R 4 sec "12" and a drop mark in the vicinity of Pier 6 of the former Charlestown Navy Yard. Courses will be multiple laps as posted.

FINISH: At the last posted mark. Courses will be shortened only at this mark.

TIME LIMITS: May, June & July evening races: First yacht - 2045, all others yachts 2100; August & September - 2015 and 2030.

CLASSES & SCORING: Races will be sailed and scored (Rinderle "B") as a single class. The fleet will be split into two sub-classes with trophies awarded in each sub-class.

A current PHRF certificate is required. Yachts may sail each race either as "racing" or "cruising" per their certificates. The RC will monitor channel 69.

SOCIAL ACTIVITIES: To be determined.



Event Sailing Instructions
BYC Wednesday Evening Races
20 Wednesday Evening Races.
From May 14 to September 24, 2008
Organized and Sponsored by Boston Yacht Club
Marblehead, MA.

Entry into this series for the full season automatically includes entry fees for the BYC Memorial Weekend, Hodder and Fall Regattas. See box at end of this Event Sailing Instructions.

- 1. Introduction:** The Boston Yacht Club invites all PHRF, Sonar and Viper Class boats to compete in this series of races. PHRF and Sonar class boats will race without spinnakers. J105 boats will race as a one design class.
- 2. Skippers Meeting:** Wednesday, May 7, at the Main Lounge of the BYC at 1930 hrs.
- 3. Rules:** Mass Bay Sailing Association General Sailing Instructions (GSI) will apply except as changed below:
- A. Para. B. Rules of Part II of the Racing Rules of Sailing (RRS) will apply at all times.
 - B. Para C. Add: One-Design class boats must be equipped with navigation lights in accordance with Coast Guard regulations, current distress flares, and have a motor or designated tow partner.
 - C. Add Para E as follows: Children under 12 must wear PFD's at all times.
- 4. Entries:** Entries should be made by submitting the entry form provided in the 2008 Mass Bay Handbook or available from BYC, together with appropriate fee and current PHRF-NE rating certificate to: BYC Race Committee, P.O. Box 487, Marblehead MA, 01945.

| | | | | | |
|------------------------|----------------|-------------|---------------------------|------------|--------|
| Fees: | Full 3 Seasons | Before 5/14 | \$140* | After 5/14 | \$150* |
| | Single Season | | | After 5/15 | \$65* |
| *Discounts | | | US Sailing | \$14 | |
| | | | MBSA | \$5 | |
| Entry Deadline: | | | 1630 hrs of any race day. | | |

- 5. Notices to Competitors:** Notices to competitors will be posted on the official notice board near the front desk of the Boston Yacht Club.
- 6. Changes to Sailing Instructions:** Any change to the sailing instructions will be posted before 2100 Hrs. on the Thursday before they are to take effect, except that any change to the schedule of races will be posted by 2100 Hrs. on the day before it will take effect.
- 7. Signals Made Ashore:** Signals made ashore will be displayed from the yardarm of the BYC flagstaff.
- 8. Schedule of Races:**

| | | |
|-----------------|-----------------|-----------------|
| <i>Spring</i> | <i>Summer</i> | <i>Fall</i> |
| 14 May – 25 Jun | 2 July – 13 Aug | 20 Aug – 24 Sep |

The first Warning Signal will be at 1800 hrs.

- 9. Classes:** Alphabetical Code Flags designate PHRF Classes and will be flown from the backstay of all boats except J105, Viper and Sonar classes..
- Class breaks will be announced at the Skippers Meeting. (Paragraph 2 above.)
- 10. Racing Area:** In the vicinity of Cat Island where the Race Committee signal-boat Carl Alberg will set a starting line.
- 11. Course:**
- A. Letter designations for marks are shown on the Wednesday Evening Races Chart, available at the BYC front desk.
 - B. Code Flag "V" will signal changes to previously posted courses prior to the next start.
 - C. Course signals will be displayed prior to or with the Preparatory Signal (changes RRS 27.1).
 - D. Code flag "T" shall be used to indicate that the posted course is to be sailed twice around. In the second rounding, the starting mark shall be rounded only if posted as the last mark of the course.
 - E. The finishing line will at the last posted mark unless the course is shortened in the prescribed manner.
- 12. Marks.** Marks will be as identified in the Boston Yacht Club Wednesday Evening Races List of Marks.

13. The Start:

- A. PHRF classes will start in accordance with Paragraph 13 of the GSI
- B. The J105, Viper and Sonar classes will start in accordance with the RRS Appendix Q – Sound Signal Starting System. The Warning Signal for the J105 class will be given with the Starting Signal for Class A; the Warning signal for the Viper class will be given with the Starting Signal for Class B and the Warning signal for the Sonar class will be given with the Starting Signal for Class C.

14. Time Limit: At the discretion of the BYC Race Committee.

15. Protests: Written protests must be filed with the Race Committee within 30 minutes of the return of the Committee Boat to the BYC float. If participants are not available, the Protest Committee reserves the right to hear and decide the protest on the information available at the time. Redress for scoring errors will be heard no later than one week after the request for redress.

16. Scoring:

- A. Low point scoring will be used with $\frac{3}{4}$ points awarded for first place (changes RRS A 4.1). Individual race scores will be excluded from series scores in accordance with paragraphs 17 (B) and (C) below (changes RRS A2).
- B. If the scoring penalty of RRS 44.3 is invoked the number of penalty places shall be the whole number (rounding 0.5 upward) nearest 20% of the number of boats starting in the class, with a minimum value of 2 places. The penalized boat shall not be scored worse than DNF. The scores of other boats shall not be changed.
- C. A special penalty will be assessed the winner of each PHRF class as follows: 36 seconds per nautical mile the first week after winning and 18 seconds the second week. These penalties may be cumulative, but will not extend beyond the week for which they are intended (despite cancelled races), nor will they extend between the three separate series. Special penalties will not be assessed for the one-design classes.

17. Trophies:

- A. First place prizes will be presented for each class in each race.
- B. Series trophies will be presented in each class for the best four race results in the spring and summer series, and the best three races in the fall series.
- C. The Race Committee may reduce the number of qualifying races in each series.
- D. The William C. Burke trophy will be awarded for the best performance over the combined spring, summer and fall series.

Fee Structure for BYC Weekend Phrf Racing Events

Memorial Day Weekend Regatta

| | |
|---------------|----------|
| Entry Fee*: | *\$50.00 |
| USSA Discount | \$5.00 |
| MBSA Discount | \$5.00 |

James R. Hodder Memorial Regatta

| | |
|----------------|----------|
| Entry Fee*: | *\$50.00 |
| USSA Discount | \$5.00 |
| MBSA Discount: | \$5.00 |

BYC Fall Regatta

| | |
|---------------|----------|
| Entry Fee*: | *\$50.00 |
| USSA Discount | \$5.00 |
| MBSA Discount | \$5.00 |

*** For boats registered in the full season of BYC Wednesday Evening Racing no entry fee is required for. these events**

BOSTON HARBOR PHRF

WEDNESDAY EVENING RACES

SAILING INSTRUCTIONS

June: 4, 11, 18, 25,
July: 9, 16, 23, 30
August: 6, 13, 20, 27
September: 3, 10

MBSA General Sailing Instructions
except as modified herein or by
specific direction of the Race
Committee

SPONSOR: Boston Harbor PHRF
Cottage Park Yacht Club

ENTRY FEE(s): \$70. Season/\$60.*
\$30. single series/\$25**

**\$5. discount US SAILING members
\$5. discount MBSA members*

****\$2.50. discount US SAILING members
\$2.50. discount MBSA members*

ENTRY TO: Boston Harbor PHRF (checks payable to Boston Harbor PHRF)
c/o R.W. Hyde Construction Attn: Richard Hyde
556 Trapelo Road
Belmont, MA 02478

SKIPERS MEETING: None. Please forward completed entry form with check.

CLASSES: A: PHRF CRU rating 171 and below
B: PHRF CRU rating 172 and above

THE START: Races will be started using RSS 26. The Warning signal will be made at 1830 hours. The Warning signal in September will be at 1800 hours.

STARTING LINE: In the vicinity of Yellow Nun "E" 1.5 miles west of Deer Island Light

FINISH LINE: As signaled, unless the course is shortened in the prescribed manner.

SOCIAL ACTIVITIES: Cash bar at CPYC after the race.

ADDITIONAL INSTRUCTIONS: Each racing boat must identify itself by coming within hailing distance of the Race Committee signal boat prior to the beginning its class starting sequence, but not within five (5) minutes of the start of the prior class. Please approach the Race Committee for a course sheet.

There are two types of people
in the world: those who sail...



Jubilee Yacht Club
Thursday Night Racing

...and those who just disturb the water.

For over thirty years Jubilee Yacht Club has sponsored Thursday night racing without limitations:

No limits on legal gear.
No limits on the racing.
No limits on the competitiveness.
No limits on the camaraderie.
No limits on the fun.

Spring Series: **May 15** through **July 17**

Summer Series: **July 24** through **Sept. 25**

JYC Thursday Night Racing includes fleets for all types of racers from novice and occasional racers (cruiser) to those who want to 'mix it up,' including a one-design fleet or two.

The **skippers' meeting** is Thursday, May 8, 2008, at 1830 in the JYC Hall.

The first race of the Spring series is Thursday, May 15, 2008.

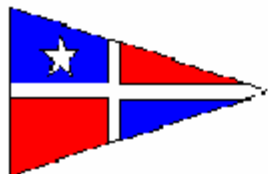
For a Notice of Race, Sailing Instructions, and results visit: **www.jycracing.org**

Send your entry to:
JYC REGATTA COMMITTEE
c/o Jubilee Yacht Club
P.O. Box 104
Beverly, MA 01915

| Entry Fees | | Member Discounts | |
|-------------------|----------|------------------|--------|
| | | U.S. Sailing | MBSA |
| Season (20 Races) | \$155.00 | \$10.00 | \$5.00 |
| Series (10 Races) | \$90.00 | \$5.00 | \$5.00 |
| Single Race | \$12.00 | \$1.00 | \$1.00 |

One Free Race

First Time Racing on Thursdays



Boat Name: _____

Skipper: _____

Boat Model: _____

Jubilee Yacht Club ☐ Racing ☐ Cruising Rating _____

Thursday Night Series

The Package Deal

Sign up and pay for the entire 2008 Thursday Night season (20 Races) and we'll include entry to both the JYC Regatta and Phil Small Regatta at no extra charge. A savings of over \$90.



Event Sailing Instructions
BYC Memorial Day Weekend Regatta
Two Races
May 24, 2008
Organized and Sponsored by the Boston Yacht Club
Marblehead, Massachusetts.

Entry fees for this regatta are automatically covered by entry into the full season of the Boston Yacht Club Wednesday Evening Races. See paragraph 4 below.

- 1. Introduction:** It is intended to run two PHRF handicap races using “round the buoys” format with either portable or government marks as appropriate for the weather conditions. There will be two divisions; PHRF Racing and PHRF Cruising.
- 2. Check-in Before the Start:** Entries shall check-in with the Race Committee using VHF channel 72 before the first Warning Signal of the day.
- 3. Rules:** The Mass Bay Sailing Association Notice of Race and General Sailing Instructions (GSI) will govern the regatta, except as any of these are changed by these Event Sailing Instructions,(ESI).
- 4. Entries:** Entries should be submitted before 1800 hrs on May 23, together with the appropriate fee and current PHRF NE handicap certificate to: **BYC Race Committee, 1 Front Street, Marblehead MA, 01945.** (Contact Geoff Smith 508 358-7542). Boats registered in the BYC Wednesday Evening Full Series and entering this race should register their intention and division by email: gesmith1000@comcast.net.
Fees: \$50 less discounts of \$5 for USSA members and \$5 for MBSA members.
Fees are not required for boats registered for full BYC Wednesday Evening Series
- 5. Notice to Competitors:** Notices to competitors will be posted on the official notice board located near the front desk of the BYC. The scratch list will be posted on the official notice board at 0830 on Saturday, May 24.
- 6. Changes to Sailing Instructions:** Any change to the sailing instructions will be posted before 0830 hrs on the day it is to take effect, except that any change to the schedule of races will be posted by 2100 hrs on the day before it will take effect.
- 7. Signals Made Ashore:** Signals made ashore will be displayed from the yardarm of the BYC flagstaff.
- 8. Schedule of Races:** Two races are scheduled. The Warning Signal for the first race will be made at 1100 hrs. The second race will start after the finish of the first race.
- 9. Classes and Class Flags:** Classes shall be in accordance with MBSA class splits. All entries shall fly the appropriate class flag from their backstay.
- 10. Racing Area:** The starting area will be in the vicinity of Tinkers Rock Gong GR “TR”, Mark “D”; List A of the MBSA Handbook, unless the Race Committee Signal Boat “Carl Alberg” displays Code Flag “L” and proceeds elsewhere.
- 11. Marks:** Marks shall be in accordance with the MBSA Lists A and B. Portable marks will be orange tetrahedrons.
- 12. The Start:** Races shall be started in accordance with Paragraph 14 of the GSI. The time interval between the start of one class and the warning signal for the subsequent class will be at least one minute. Any class with less than three entries may be combined with another class for a combined start. Classes will be scored independently.
- 13. Recalls:** Recalls shall be in accordance with RRS 29. The Race Committee will attempt to hail OCS boats on VHF channel 72. Failure to hail, hail of some but not all, or untimely hail of OCS starters shall not be grounds for redress. This changes RRS 62.1(a).
- 14. Time Limits:** Two and one half hours after the start of each class for the first race, and one and one half hours for the second race. The Race Committee may extend these time limits, and will make such announcements VHF channel 72.
- 15. Scoring:** The Low Point scoring system, RRS Appendix A, will apply with ¾ points for first place. Two races are scheduled, of which one race shall be completed to constitute the series. No score will be excluded for the series score (Changes RRS A2). Combined corrected times will be used to break ties
- 16. Prizes:** The Centennial Trophy will be awarded for first place in Class A, the S. Ralph Cross Trophy for the first place in Class B, The Mohawk Trophy for the first place in Class C, and the Blake Cooley Trophy for the first place in Class D. For each class, keeper trophies for the first and second place for the combined races will be presented. Third place trophies will also be awarded for any class with ten or more entries.
- 17. Social Activities:** The BYC Gazebo, Yardarm and Main Lounge will be open after the race, offering BYC’s hospitality to all Captains, their crew and guests. BYC’s acclaimed chowder and hot dogs will be served to all skippers and crew. Yardarm facilities (bathrooms, showers, changing areas) are available to all participating sailors prior to boarding their boats and after the races.



Event Sailing Instructions
LAMBERT OCEAN RACE
EASTERN YACHT CLUB
Marblehead, Massachusetts
Sunday, June 1, 2008

3. Rules: The race will be governed by the MBSA Notice of Race and General Sailing Instructions, except as they are changed by these Event Sailing Instructions.

4. Entries: Submit a completed entry form no later than 1200, Saturday, May 31, 2008. You may register on-line at www.easternyc.org - go to "Regatta Information 2008" and choose this regatta. Entry fee is \$40 (take a \$5 discount for US Sailing members, additional \$5 discount if also a MBSA member). Entry forms can also be found in the Mass Bay Year Book and can be sent to the EYC Race Committee, 47 Foster Street, Marblehead, MA, 01945, accompanied by a valid PHRF Certificate.

5. Notices to Competitors: Notices to competitors will be posted on the official notice board located opposite the EYC Front Desk. Scratch sheets and any change to the Sailing Instructions will be available at 0900 on race day at the EYC Clubhouse, and from the Race Committee Boat "Emerson T. Oliver" on station before the starting sequence begins. The Race Committee will monitor VHF Channel 72 from one hour before the first Warning Signal until all yachts have finished the race. Communications will not be acknowledged during the starting sequence unless marine safety is involved.

7. Signals Made Ashore: Will be displayed on the yardarm of the EYC Flagstaff.

8. Schedule of Races: One race is scheduled for each Class

9. Class Flags: Flag A = PHRF A; Flag B = PHRF B; Flag C = PHRF C; Flag D = PHRF D; Flag E = PHRF E; Flag F = PHRF Cruising F; Flag G = PHRF Cruising G. Depending on the number of entries, some Classes may be started together.

10. Racing Area: In the vicinity of Tinker's Rock Gong, Mark D.

12. Marks: MBSA Standard Rounding Marks, Lists A & B, or MBSA Standard Courses, using orange tetrahedrons and a black band attached to an orange tetrahedron for a change of course after the start mark. If a green flag is flown no later than four (4) minutes before the start it means "Mark 1 for the class about to start will be a green tetrahedron. This applies to each rounding of Mark 1 by this class" (changes RRS 27.1 and Race Signals).

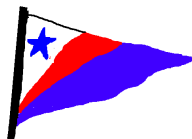
14. The Start: The first Warning Signal will be made at 1100.

15. Recalls: The Race Committee will attempt to hail premature starters on VHF Channel 72. The failure to hail premature starters, the hail of some but not all premature starters, or the untimely hail of premature starters shall not be grounds for redress [changes RRS 62.1(a)].

20. Time Limit: Five hours after each Class start.

24. Prizes: Trophies will be awarded to the yacht with the best corrected time in each class with three or more entries. Second and third place trophies will be awarded to classes with six and ten or more entries, respectively. The Gerard Barnes Lambert Trophy will be awarded to the winners in Classes A & B. The Chesterton Bowl will be awarded to the winners in Classes C & D. The Haze Trophy will be awarded to the winner in the Cruising Class. The Periwinkle Trophy will be awarded to the Eastern Yacht Club yacht making the best corrected time in the racing classes.

TROPHY PRESENTATION AND SOCIAL EVENTS: All captains, crews and their guests are invited to attend a special social function at the Eastern Yacht Club following the race. Chowder and beer will be served, and are included in the entry fee. Trophies will be presented.



Corinthian Yacht Club *Marblehead*

Summerset Regatta

SAILING INSTRUCTIONS

Sunday June 8, 2008

- 1. Introduction:** The Corinthian Yacht Club (CYC) invites all yachts with valid 2008 PHRF or N.E. Multi-Hull rating certificates to the Summerset Regatta.
- 3. Rules:** The event will be governed by the Racing Rules of Sailing (RRS), MBSA Notice of Race and General Sailing Instructions, except as these are changed by these Event Sailing Instructions.
- 4. Entries:** Send to Corinthian Yacht Club Race Committee, Corinthian Lane, Marblehead, MA 01945, no later than 1600 hours, Saturday, June 7, 2008, accompanied by a valid rating certificate and the entry fee of \$40 (\$5 discount for US Sailing members, and/or \$5 discount for MBSA members). For those who participated in prior CYC events, on-line entry procedures are planned to be available at www.corinthianyc.org. Entries received after the deadline may be accepted at the discretion of the Race Committee, but if so, the fee will be \$50 with no discount. Contact: Jim Whipple (617) 720-4262.
- 5. Notices to Competitors:** Notices to competitors will be posted on the official notice board located at the CYC Pier Head. There is no Skippers Meeting. Scratch sheets will be available at the front desk of the Corinthian Yacht Club at 0900 on the day of the event. The CYC Race Committee (RC) is under no obligation to hand out scratch sheets on the water.
- 6. Changes in Sailing Instructions:** Any changes to the General or Event Sailing Instructions will be posted on the official notice board located at the CYC Pier Head by 0900 on the day of the race.
- 7. Signals Made Ashore:** Will be displayed at the yardarm of the CYC Flagstaff.
- 8. Schedule of Races:** Two races are scheduled. The second race will start shortly after the finish of the first race.
- 9. Class Flags:** A,B,C: PHRF A,B,C - D: PHRF D & E - F: PHRF Cru. F & G - H: N.E. Multi-Hull - J: J-105
- 10. Racing Area:** In the vicinity of Tinker's Rock Gong, Mark D.
- 12. Marks:** MBSA Standard Rounding Marks, Lists A & B, or MBSA Standard Courses, using orange tetrahedrons and a black band attached to an orange tetrahedron for a change mark. If this mark is subsequently changed, it will be without the black band.
- 13. The Start:** The first Warning Signal will be made at 1130 hours.
- 14. Recalls:** The Race Committee will attempt to hail premature starters on VHF Channel 72. The failure to hail premature starters, the hail of some but not all premature starters, or the untimely hail of premature starters shall not be grounds for redress [changes RRS 62.1(a)].
- 16. Time Limit:** Three hours after the start of each class.
- 23. Prizes:** The Interstate Challenge Cup will be awarded for the best relative performance, regardless of class. Trophies will be awarded in each class with at least three competitors. Second place trophies will be awarded in each class with at least six (6) competitors. Additional trophies will be awarded for each six (6) additional competitors in a class. Where more than one race is sailed, trophies will be awarded in each class based on low point scoring, with no throw-out, and with ties broken by combining corrected times [changes RRS A2 and A8.1].
- 24. RADIO COMMUNICATIONS & EMERGENCY CONDITIONS:** The Race Committee will monitor VHF Channel 72 from 1030 hours until all yachts have finished the race. Emergency conditions should be reported to the Race Committee on VHF Channel 72. The CYC Dockmaster will monitor VHF Channel 9.

CYC SEASON DISCOUNT: A package fee of \$80 (\$10 discount for US Sailing members, additional \$10 discount for MBSA members) is offered for entering all three of the CYC Regattas: Summerset, Midsummer and Summer. The package fee is available only in advance of the Summerset and is not refundable.

The hospitality of the club is extended to all skippers, their crews and guests, to participate in the trophy presentations and social activities.



Constitution Yacht Club 2008 PHRF Spring Regatta

***Saturday, 14 June, 2008
Boston Outer Harbor
Multiple races***

SPONSOR: Constitution Yacht Club

ENTRY FEE: \$40.00 (\$5 discount for US Sailing members, additional \$5 discount for MBSA members.)

ENTRIES & QUESTIONS TO:

Greg Graham, Fleet Captain
38 Shirley Road
Waltham, MA 02452
781.258.7696, e-mail: gtgraham@rcn.com

SAILING INSTRUCTIONS: Will be posted on the CYC web site www.cycboston.org. Also available by fax if requested, and from the RC Boat until 5 minutes prior to Warning.

STARTS: Warning Signals at 1130 for first race, others 5–10 minutes after last boat finishes. Starts in the vicinity of yellow Nun "Y" at the southwest corner of President Roads, unless announced differently by the RC.

COURSES: Marks to be posted on RC Boat. Courses will be multiple laps as posted.

FINISH: The finish line lies between the RC boat and the pin. All races will start and finish in the outer harbor.

TIME LIMITS: 4 hours per series.

CLASSES & SCORING: Races will be sailed and scored (Rinderle "B") as a single class. The fleet may be split into two sub-classes with trophies awarded in each sub-class.

A current PHRF certificate is required. Yachts may sail the races either as "racing" or "cruising" per their certificates. The RC will monitor channel 69.

SOCIAL ACTIVITIES: Will be announced in the Sailing Instructions.

Remember: The 2009 New Year's Day Race: 1 January 2009 at 1200 in the Inner Harbor



Event Sailing Instructions



Sunday, June 15, 2008

Hospice of the North Shore 14th Annual Benefit Regatta

Organizing Authority: Corinthian Yacht Club

1. Classes: The regatta is open to PHRF Racing, Cruising, and One Design Classes. For PHRF yachts this regatta is a qualifier for the 2008 Massachusetts Bay PHRF Season Championship. One Design yachts will be assigned appropriate PHRF ratings for this race by the event committee of Hospice of the North Shore no later than 0930 (EDT), June 15, 2008. A minimum of three One Design boats of the same class will constitute a "fleet" within a PHRF class.

2. Rules: The Racing Rules of Sailing (RRS), the Mass Bay Sailing Association Notice of Race and General Sailing Instructions (GSI) will govern the regatta, except as changed by these Event Sailing Instructions (ESI). One Design Class boats are exempted from the requirements of ORC Category 4. *The representative for the 2009 National Hospice Alliance Championship in Annapolis will be selected from the spinnaker fleets by the rules to be announced at the Skippers' Meeting.*

3. Entries: Entries must be submitted to Corinthian Yacht Club before 1730 on June 13. Late entries may be accepted at the discretion of the Race Committee. Entries must be accompanied by the entry fee and a valid PHRF certificate. Entry forms are available at the Boston, Corinthian and Eastern Yacht Clubs, and can be downloaded from the websites of BYC (www.bostonyachtclub.net) and Hospice of the North Shore (www.hns.org/regatta).

The entry fee is \$50. Late entries may make an additional donation of \$10 to benefit Hospice of the North Shore

4. Notice to Competitors: Notices will be posted on the Official Race Committee Notice Board located in BYC.

5. Changes to Sailing Instructions: Any amendments to these Sailing Instructions will be distributed at the Skippers' Meeting and will be posted as set forth above. No amendments may be made after 0930, June 15.

6. Skippers' Meeting: There will be a Skippers' Meeting on June 15 at 0930 at Corinthian Yacht Club when Sailing Instructions, any Amendments and Scratch Lists will be distributed. It is the responsibility of each entrant to obtain this information at that time. No documents will be available or distributed on the water.

7. Signals Made Ashore: Signals made ashore will be displayed from the yardarm of the CYC flagstaff.

8. Schedule of Races: One race is scheduled for all classes. The first warning signal shall be no earlier than 1200.

9. Check-in Before the Start: All boats must check-in by sailing past the Race Committee signal boat.

10. Classes and Class Flags: Alphabet code flags will designate classes in accordance with the MBSA class splits. A class with less than three entries may be combined with another class for the start. Classes will be scored independently.

11. Racing Area: In the vicinity of Tinkers Rock Gong Buoy, Mark D, List A.

12. Marks: Marks will be as identified in the MBSA Standard Rounding Marks Lists A and B or MBSA Standard Courses. Portable marks will be orange tetrahedrons.

13. The Start: Races will be started in accordance with RRS 26. The time interval between the start of one class and the warning signal for the subsequent class will be at least one minute.

14. Recalls: Recalls will be in accordance with RRS 29. The Race Committee will attempt to hail OCS boats on VHF channel 72. Failure to hail, hail of some but not all, or untimely hail of OCS starters, shall not be grounds for redress. This changes RRS 62.1(a).

19. Time Limit: The time limit will be 4 hours.

20. Scoring: The Low Point scoring system, RRS Appendix A, will apply. The alternative scoring penalty of USSA Rule 44.3 will apply except in the case of contact between yachts racing.

21. Protests: Protests must be filed on forms provided by Corinthian Yacht Club and submitted to the Race Committee no later than one hour after the Race Committee Signal Boat has docked. Docking time will be posted as set forth under Paragraph 4.

22. Prizes and Social Activities: Trophies will be awarded in each class with at least three registered competitors. The awards ceremony is scheduled at 1700. Details at www.hns.org/regatta. Sunday social activities will begin after

Solstice Regatta

Saturday Evening

June 21



Come race with us around the islands on the longest week end day of the year

(Hingham Bay Governors Cup Qualifier)

| | |
|---------------------------|--|
| Starting Line: | Hingham Bay Starting Buoy (200yd N Of Sheep Is.) |
| Starting Time: | First Gun at 4 PM |
| Finish Line: | Hingham Bay Starting Bouy (200 yd N of Sheep Is.) |
| Time Limit: | 8:40 PM |
| Courses: | Island(s) to be circumnavigated will be listed by fleet on the committee boat. The circumnavigation may be done in either direction. After circumnavigating the listed islands all boats will round the pin end of the starting line and then complete an additional circumnavigation of Peddocks Island before finishing. Note this affords the RC an opportunity to shorten the race if conditions require it. |
| Social Activities: | Awards and food after the race. Location to be announced. |

For latest updates, scratch sheets and results check our web site www.hbphrf.org

Additional Sailing Instructions

Rules: Races will be governed by the MBSA General Sailing Instructions except as modified in the Hingham Bay Racing Circular, herein, or by the race committee.

Classes:

| | |
|----------|----------|
| Racing | |
| A: | MBSA A,B |
| B: | MBSA C |
| C: | MBSA D,E |
| Cruising | |
| F: | MBSA F |
| G: | MBSA G |

Flags: Boats should fly their class flag from the backstay.

Race Committee: The RC will monitor channel 68. Any boat must notify the RC if withdrawing.

Race Information: Any changes to the sailing instructions or notices to competitors will be posted at www.hbphrf.org 3 hours prior to the scheduled race start. There will be no captains meeting.

Trophies: Trophies for 1st, 2nd and 3rd place will be awarded at the party after the race.

For information:

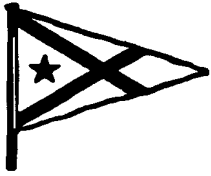
David Nelson 781-297-9236
Email: dmch.nelson@verizon.net

Entry to:

Mail to: P.O. Box 540,
Hingham, MA 02043 or register on-line at
www.hbphrf.org

Entry Fee:

\$35.00 - MBSA, USSA Discount \$5.00
FREE - HB PHRF Season & Weekend Pass
(must register on-line or via mail)



PATTON BOWL REGATTA

Manchester Yacht Club
Saturday, June 21, 2008



1. Introduction: The Manchester Yacht Club (MYC) invites all yachts with a valid PHRF or Multi-Hull rating certificate to participate in the Patton Bowl Regatta and then to an awards social at the MYC immediately following the race.

2. Check-in Before Start: All boats must check-in with the race committee using channel 72 before the first warning signal of the day.

3. Rules: The races are governed by the MBSA Notice of Race and General Sailing Instructions, except as changed by these Event Sailing Instructions.

4. Entries: Send to MYC Race Committee, Manchester Yacht Club, P.O. Box 266, Manchester, MA 01944. Entries must be received by 1900 hours June 20th and must be accompanied by a valid PHRF certificate and an entry fee of \$45.00 payable to Manchester Yacht Club. (\$5 discount for US Sailing members, additional \$5 discount for MBSA members.) Late entries at discretion of Race Committee with \$5.00 late fee. Contact: Emmett Holt (978) 468-3355, email race@manchesteryachtclub.org

5. Notices to Competitors: Notices will be posted on the board at the Clubhouse. The Race Committee will also monitor VHF 72 starting at 1000 on the day of the race until the last finish. Scratch sheets and any changes to the Sailing Instructions will be available from the race committee boat "TRIDENT" on station before the first warning signal of the day.

6. Signals Made Ashore: Any signals will be displayed at the MYC flagstaff.

7. Schedule of Races: Two races are scheduled. The first Warning Signal will be made at 1100. The second race will start as soon as possible after the first race.

8. Classes and Class Flags: Classes will be accordance with MBSA class splits. "J" flag will designate the J105 class. "H" flag will designate NE Multi-Hull class which will start last. All classes shall display the appropriate class flag from their backstay. Depending on the number of entries, classes may be combined for a joint start. Classes will be scored separately.

9. Racing Area: The Racing Area will be in the vicinity of Gales Ledge Nun Buoy RN "6" unless the race committee boat "TRIDENT" displays code flag "L" and proceeds elsewhere. Racers are reminded to observe the RESTRICTED AREAS around Bakers Island as listed in the MBSA book page 16. Yachts shall not traverse the area bounded by a line connecting the following buoys in the sequence listed: Bell G"9" (Powers Rock), Salem Channel Cans: 7, 5 & 3, Nuns 2 & 4 south of Baker's Island, Can 5 (Popes Head), Bell G"9" (Powers Rock). Yachts entering this area must leave between the same two boundary buoys that they pass while entering, unless a listed mark is a rounding mark.

10. Marks: Marks will be in accordance with MBSA lists A and B. Portable marks will be orange tetrahedrons.

11. The Start: The first Warning Signal will be made at 1100. The time interval between the start of one class and the warning signal for the subsequent class will be at least one minute.

12. Recalls: The Race Committee will attempt to hail premature starters on VHF 72. Failure to hail any or all premature starters shall not be grounds for redress; this alters RRS 62.1(a).

13. Time Limit: The time limit for each race shall be 2 ½ hours measured from the start of each class. Time limit may be extended by Race Committee on VHF 72.

14. Prizes: First place trophies will be awarded in each class with at least three starters. Second and third place trophies will be awarded for each class with six and ten or more starters, respectively.

15. Social Activities & Awards: All captains, crews and their guests are invited to the Manchester Yacht Club following the race at approximately 1630. There will be a cash bar along with free chowder and refreshments. Trophies will be presented.

CONSTITUTION CUP

Saturday, June 28th, 2008

A Mass Bay Qualifying Race

Two Races (if possible)

Sponsor: Boston Harbor PHRF

ENTRY TO: Boston Harbor PHRF

c/o R. W. Hyde Construction 556 Trapelo Road

Belmont, MA 02478

Attn: Richard Hyde



SAILING INSTRUCTIONS: MBSA ORC General Instructions except as modified herein or by Cottage Park Yacht Race Committee monitoring VHF Channel 72

ENTRY FEE: \$50

US Sailing and/or MBSA Members - Less \$5.00 each Boston/Hingham

Season Pass - Less \$25.00 Make check payable to Boston PHRF

Entries must be postmarked by June 25th Late entry add \$10.00

SKIPPER'S MEETING: None, please forward completed entry with check

CLASSES: A,B,J-105, C, D, E and F: Splits according to MBSA

THE START: Races will be stated using RRS 26. 1. Warning gun at 1100 hours.

STARTING LINE: Rendezvous 1030 hours in the vicinity of Race Mark "M", Boston Entrance

FINISH LINE: As signaled, unless the course is shortened in the prescribed manner.

COURSE(S): MBSA Standard Courses

TIME LIMIT: 3 hours after the start of each race.

TROPHIES: Trophies awarded at the CPYC Annual Awards Night to be announced at



Event Sailing Instructions
ANNUAL REGATTA
EASTERN YACHT CLUB
Marblehead, Massachusetts
Friday, July 4, 2008

3. **Rules:** The race will be governed by the MBSA Notice of Race and General Sailing Instructions, except as they are changed by these Event Sailing Instructions.
4. **Entries:** Submit a completed an entry form no later than 1200, Thursday, July 3, 2008. You may register on-line at www.easternyc.org - go to "Regatta Information 2008" and choose this regatta. Entry fee is \$40 (take a \$5 discount for US Sailing members, additional \$5 discount if also a MBSA member). Entry forms can also be found in the Mass Bay Year Book and can be sent to the EYC Race Committee, 47 Foster Street, Marblehead, MA, 01945, accompanied by a valid PHRF Certificate.
5. **Notices to Competitors:** Notices to competitors will be posted on the official notice board located opposite the EYC Front Desk. Scratch sheets and any changes to the Sailing Instructions will be available at 0900 on race day at the EYC Clubhouse, and from the Race Committee Boat "Emerson T. Oliver" on station before the starting sequence begins. The Race Committee will monitor VHF Channel 72 from one hour before the first Warning Signal until all yachts have finished the race. Communications will not be acknowledged during the starting sequence unless marine safety is involved.
7. **Signals Made Ashore:** Will be displayed on the yardarm of the EYC Flagstaff.
8. **Schedule of Races:** One race is scheduled for each Class.
9. **Class Flags:** Flag A = PHRF A; Flag B = PHRF B; J/105 Class Flag; Flag C = PHRF C; Flag D = PHRF D; Flag E = PHRF E; Flag F = PHRF Cruising F; Flag G = PHRF Cruising G. Depending on the number of entries, some Classes may be started together.
10. **Racing Area:** In the vicinity of Tinker's Rock Gong, Mark D.
12. **Marks:** MBSA Standard Rounding Marks, Lists A & B, or MBSA Standard Courses, using orange tetrahedrons and a black band attached to an orange tetrahedron for a change of course after the start mark. If a green flag is flown no later than four (4) minutes before the start it means "Mark 1 for the class about to start will be a green tetrahedron. This applies to each rounding of Mark 1 by this class" (changes RRS 27.1 and Race Signals).
14. **The Start:** The first Warning Signal will be made at 1100.
15. **Recalls:** The Race Committee will attempt to hail premature starters on VHF Channel 72. The failure to hail premature starters, the hail of some but not all premature starters, or the untimely hail of premature starters shall not be grounds for redress [changes RRS 62.1(a)].
20. **Time Limit:** Five hours after each start.
24. **Prizes:** Trophies will be awarded to the yacht with the best corrected time in each class with three or more entries. Second and third place trophies will be awarded to classes with six and ten or more entries, respectively. The Commodore James J. Storrow Trophy will be awarded to the winners in Classes A and B. The Cleopatra's Barge Cup will be awarded to the winners in Classes C and D. The Gracie Trophy will be awarded to the winner in the Cruising Class. The Puritan cup will be awarded to the Eastern Yacht Club yacht making the best corrected time in the racing classes, and the Guy Norman Cup will be awarded to the Eastern Yacht Club yacht making the best corrected time in the Cruising Class. The O'Day Trophy will be awarded to the winner of a fleet racing as a one-design class, with at least six starters.

TROPHY PRESENTATION AND SOCIAL EVENTS: All captains, crews and their guests are invited to attend a special social function at the Eastern Yacht Club following the race. Chowder and beer will be served, and are included in the entry fee. Trophies will be presented.

EYC PHRF SEASON PASS: This gives you registration in all of the following races; Lambert Ocean Race, Annual Regatta, and Chandler Hovey Race. Discounted entry fees are \$105 for all three events (\$90 for US Sailing Members, \$75 if MBSA Members also).

Scorpion Bowl

Saturday Evening
July 12



A Twilight 'in the bay' Race followed by an awesome party!
(MBSA and Hingham Bay Governors Cup Qualifier)

| | |
|---------------------------|--|
| Starting Line: | Hingham Bay Starting Buoy (200yd N Of Sheep Is.) |
| Starting Time: | First Gun at 1700 |
| Finish Line: | In Hull Bay. |
| Time Limit: | 2040 |
| Awards: | First, Second, Third place trophies in each class to be presented after the race at the Hull Yacht Club. |
| Social Activities: | All skippers and crews are invited to the Hull Yacht Club for awards and party, immediately following the race. FREE dock space and moorings available. |

Additional Sailing Instructions

Rules: Races will be governed by the MBSA General Sailing Instructions except as modified in the Hingham Bay Racing Circular, herein, or by the race committee.

Classes:

| | |
|----------|----------|
| Racing | |
| A: | MBSA A,B |
| B: | MBSA C |
| C: | MBSA D,E |
| Cruising | |
| F: | MBSA F |
| G: | MBSA G |

Flags: Boats should fly their class flag from the backstay.

Race Committee: The RC will monitor channel 68.
Any boat must notify the RC if withdrawing.

Race Information: Any changes to the sailing instructions or notices to competitors will be posted at www.hbphrf.org 3 hours prior to the scheduled race start. There will be no captains meeting.

Trophies: Trophies for 1st, 2nd and 3rd place will be awarded at the party after the race.

For information:

Bob Cunningham 617-750-1889
Email: rwc567@aol.com

Entry to:

Mail to: P.O. Box 540,
Hingham, MA 02043 or register on-line at
www.hbphrf.org

Entry Fee:

\$35.00 - MBSA, USSA Discount \$5.00
FREE - HB PHRF Season & Weekend
Pass (must register on-line or via mail)

For latest updates, scratch sheets and results check
our web site www.hbphrf.org



CORINTHIAN 200 - CHAPMAN BOWL



July 11, 2008

NOTICE OF RACE

1. Introduction: Corinthian Yacht Club and Scituate Harbor Yacht Club (the organizing authorities) invite PHRF and multi-hull sailors to participate in the Corinthian 200 - Chapman Bowl, an overnight race starting off Boston on Friday evening, July 11, 2008, and finishing off Marblehead.

2. Rules: The event will be governed by the Racing Rules of Sailing (RRS), except as any of these are altered by the Sailing Instructions (SI). Advertising will be restricted to Category A. The SI will be available by April 30, 2008, on the CYC web page www.corinthianyc.org, or the SHYC web page www.shyc.net, or by US mail from CYC, Corinthian Lane, Marblehead, MA 01945, or SHYC, 62 Jericho Road, PO Box 275, Scituate, MA 02066.

3. Eligibility and Standards: The event is open to boats with valid handicap certificates issued by PHRF New England (PHRF-NE) or the New England Multihull Association (NEMA). Certificates from other regional authorities may be submitted to PHRF-NE or to NEMA, as the case may be, for review and normalization.

All boats shall comply with the current Offshore Racing Council "Special Regulations Governing Minimum Equipment and Accommodations Standards" for Category 3. This includes the USSA prescription requiring the wearing of Personal Flotation Devices (PFD's).

4. Classes and Courses: PHRF spinnaker (A) 65 sec/mi or less, (B) 66 - 100, (C) 101 - 140, (D) 141 and up; PHRF cruising (F) 155 sec/mi or less, (G) 156 and up; and multi-hull (H). Depending on numbers of entries, classes may be combined or split, level-racing classes may be offered, and/or double-handed competition may be offered; however, for all series scoring purposes, the MBSA 2008 season class splits will be applied.

The SI will describe several possible courses ranging from about 50 to about 125 nautical miles, starting off Boston and finishing off Marblehead. Turning marks will be in Mass. Bay and/or Cape Cod Bay. On the day of the start, the race committee will choose one or more courses, depending on conditions and forecasts, with the goal of a Saturday afternoon finish for the bulk of the fleet.

5. Entry: Entries must be submitted on the official entry form and be received no later than 1800 EDT, Wednesday, July 9, 2008. The entry fee is \$90 for USSA or MBSA members and \$100 for all others. Official entry forms will be available by April 30, 2008, on the CYC web page or the SHYC web page, or by US mail from either club; see #2 (Rules) above. The entry form and the appropriate fee should be sent to the Corinthian 200 - Chapman Bowl Committee, c/o SHYC (above).

An entry received after the deadline but before the Captains' Meeting may be accepted at the discretion of the organizing authority and will require a \$25 late fee.

6. Mandatory Captains' Meeting: A mandatory captains' meeting will be held 1900 EDT, Thursday, July 10, at SHYC. CYC and SHYC intend to set up an arrangement for sailors to participate in the meeting at CYC via video conference and fax. Scratch sheets and any changes to the SI's will be available. Any captain may appoint a representative to attend by a signing a writing to such effect and having same delivered to the Race Committee representative conducting the meeting. Any boat whose captain or duly appointed representative does not attend the meeting shall have its registration returned and shall not be allowed to start nor sail in the event.

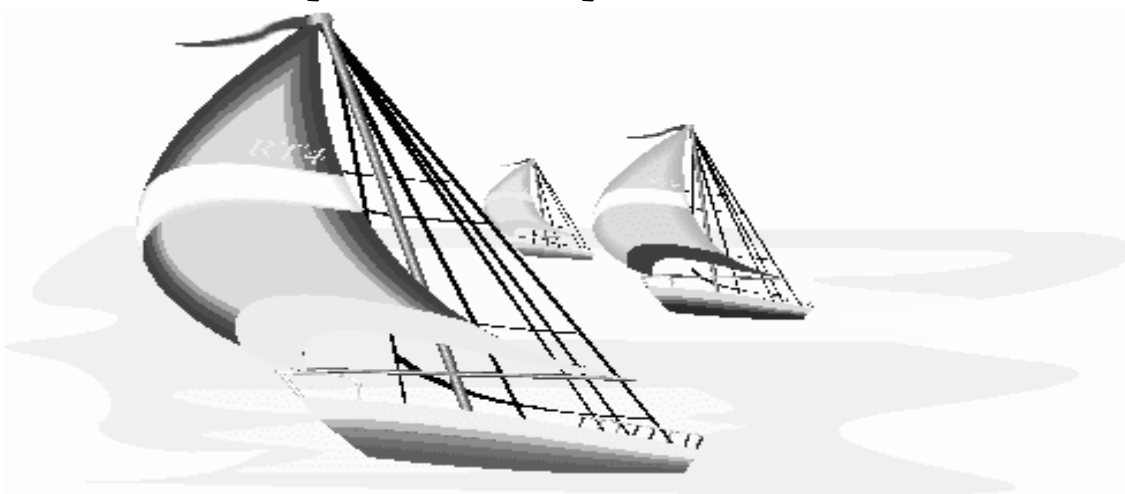
7. Start: The starting sequence will begin at 1900 EDT, Friday, July 11. The starting area will be in the vicinity of Graves lighted whistle buoy G"5", Fl G 4 sec, approximate position 42:22.6-N, 70:51.5-W (chart 13267).

8. Trophies: The number of trophies awarded for each class will depend on the number of entries for that class. Special trophies will include the Chapman Bowl, the James Nye Trophy, and the R. Steadman Hood Trophy. All awards will be presented at a post-race party at CYC around 1700 EDT, Saturday, July 12. Enter both the Corinthian 200/Chapman and Beringer overnight races for two great weekends, compete for a combined race trophy and choose your better finish score for bonus Mass Bay Championship Points.

9. Social Activities: The hospitality of SHYC and CYC is extended to all skippers, their crews and their guests. Pre-race and post-race activities are planned.

Corinthian200/Chapman Bowl and the BYC Beringer Bowl,

“*RINGER REGATTA*”



Two classic overnight races *each* Qualifier worth 1.25 Mass Bay Sailing Association points! Enter *both* the Corinthian200/Chapman Bowl and the BYC Beringer Bowl, and choose your better finish to score for MBSA regatta points!* In P'Town, a special “*RINGER REGATTA*” prize will be awarded to the boat *entered in both races* with the *best overall performance* in both the Beringer and C200/Chapman regattas.

The Corinthian200/Chapman Bowl regatta finishes in Marblehead the week prior to the Beringer. We will have the traditional Mount Gay Rum Party at the finish at the Corinthian Yacht Club. Visiting yachts can then stay in Marblehead for the week** and take part in the Beringer the following weekend! Party with us all in Provincetown and then mid-bay and Southern vessels as well as northern participants can depart Provincetown for an easy last day sail to their home port. This is the *BEST and easiest 10 days* a New England skipper could offer his crew! Two races: the best venues, the best waters, the overnights and compatriots!

Corinthian200 / Chapman is an overnight race and begins Friday July 11. See S.I.'s

“*The Races Around The Bays*”

* Boats can also enter either “Q” event independently. **Complimentary moorings are subject to availability, which should be excellent at this time of season.



Beringer Bowl Overnight Ocean Race
Friday - Saturday July 18 - 19, 2008
Organized and Sponsored by the Boston Yacht Club
Marblehead, Massachusetts

NOTICE OF RACE & SAILING INSTRUCTIONS

1. Introduction. *The Boston Yacht Club invites all yachts with valid PHRF New England, IRC and New England Multihull Association handicap certificates to participate in an overnight race from Marblehead to Provincetown and after-race social with band and barbeque on Provincetown harbor. For the more relaxed Cruising Sailors an OCS Division will be provided with a start at noon on Friday July 18, 2008.*

2. Divisions, Classes and Skippers' Meeting.

Divisions: PHRF Racing, Double-handed PHRF Racing, IRC Racing, PHRF Cruising, Multihull and OCS

Classes: PHRF Racing and PHRF Cruising using MBSA class breaks; IRC per equivalent PHRF handicaps

Skippers Meeting: OCS Division at 0900 hours Friday July 18, and all other divisions at 1700 hours Friday July 18.

3. Rules. The MBSA Notice of Race and General Sailing Instructions (GSI) and the ISAF ORC Special Regulations Category 3 races will govern, except as any of these are changed by the Sailing Instructions. For the IRC Division, IRC Rules Parts 1, 2 and 3 shall apply.

For boats sailing in a double-handed division, the following shall apply:

- a) Crew is limited to 2 persons, one of whom shall be at least 18 years of age.
- b) Wind vanes and/or autopilots may be used without penalty.
- c) Asymmetrical spinnakers may be used without penalty.
- d) Competitors sailing in the double-handed division are permitted to utilize radio communications amongst themselves while racing. This changes RRS 41.

4. Entries. Entries should be submitted indicating the division entered before 1700 hours on Friday July 11th, together with the appropriate fee and current rating certificate to the **BYC Race Committee, 1 Front Street, Marblehead, MA. 01945**. (Contact Anne Coulombe, cell (781)-254-2744, acoulombe@sciplan.com). The Beringer entry form may be downloaded from the Beringer page of the BYC web site.

Fees: \$100.00, less discounts of \$10 for USSA and \$5 for MBSA members.

5. Notices to Competitors. Notices to competitors will be posted on the official notice board near the front desk of the BYC.

6. Changes to Sailing Instructions. Changes to the sailing instructions will be provided at the Skippers Meeting.

7. Signals Made Ashore. Signals made ashore will be displayed from the yardarm of the BYC flagstaff.

8. Schedule of Races. The first Warning Signal will be made on Friday July 18 at 1200 hours for the OCS Division and, for all other Divisions at 1900 hours.

9. Class Flags. Alphabetic signal flags will designate classes and must be flown from the backstay at the start. IRC Division boats will also fly code flag H. The OCS Division is exempt from flying a code flag.

10. Check-in Procedures. All boats must check-in with the Race Committee Signal Boat before the first Warning Signal of the Race, 1200 hours for the OCS division and 1900 hours for all other divisions, by sailing by the Race Committee Signal Boat, or by using VHF channel 72.

11. Racing Area. The starting area will be in the vicinity of Tinkers Rock Gong Buoy TR, Mark "D" of the Mass Bay Handbook List A, unless the Race Committee Signal Boat Carl Alberg displays Code Flag "L" and proceeds elsewhere.

- 12. Starting Line.** The start line for the PHRF, IRC, and Multihull Divisions will be between the Race Committee Signal Boat and an orange tetrahedron. The start line for the OCS Division will be between the Race Committee Signal Boat and Tinker's Gong Buoy.
- 13. Finish Line.** The finish line will be a line bearing 090 degrees magnetic from Provincetown Harbor Approach, Long Point Shoal Lighted Bell Buoy - Green "3", "QG" which is to be passed to port.
- 14. Course and Marks.** The **course** will be given at the Skippers' Meeting. Marks of the course will be US Coast Guard navigational buoys, except for the start line which will use an orange tetrahedron as specified above in section 12.
- 15. The Start.** Races will be started in accordance with Paragraph 14 of the GSI. The time interval between the start of one class and the warning signal for the subsequent class will be at least one minute.
- 16. Recalls.** Recalls will be in accordance with RRS 29. The Race Committee will attempt to hail OCS boats on VHF channel 72. Failure to hail, the hail of some but not all, or the untimely hail of OCS starters shall not be grounds for redress. This changes RRS 62.1(a).
- 17. Finish.** Boats shall take their own finish times when crossing the Finish Line, contact the Race Committee for confirmation of finish time and complete the Finish Time Confirmation form. It is expected that the Finish Line Race Committee boat "Elizabeth M" will be on station at the Finish Line for the majority of the finishes.
- When boats are approximately ½ mile by GPS from the Finish Line, they shall hail the Finish Line Race Committee boat "Elizabeth M" with their boat name and sail number. All boats must also report their finish time, boat name and sail number promptly on VHF 72 to the "Elizabeth M". If the boat is unable to report their finishing time when crossing the line or shortly thereafter by VHF, they may report via mobile phone call to Geoff Smith on (508) 561-0202 between 0900 hours and 1200 hours on Saturday, July 19 2008.
- A signed copy of the Finish Time Confirmation form must be provided to the Race Committee by delivering it to the office of the Provincetown Marina. Boats that have not reported and received acknowledgement of their finish time may be scored DNF.
- 18. Time Limit.** Sixteen hours after the start of each class, except for the OCS Division, this will have twenty four hours. The Race Committee may extend the time limit, and will make such announcement on VHF channel 72 at 1100 hours on Saturday July 19.
- 19. Protests.** Protest forms will be available from the Race Committee representative in Provincetown and must be delivered to the Race Committee by 1000 hours Saturday, or within 1 hour of the protesting boat's finish, whichever is later. No protests will be heard for boats in the OCS Division.
- 20. Scoring.** The Low Point scoring system, RRS Appendix A, with ¾ points for first places, will apply.
- 21. Prizes.** The Beringer Bowl will be awarded for first place in Class PHRF-A. The Merrigan Cup will be awarded for first place in Class PHRF-B. Trophies for the first and second place in each class in each division will be presented. Third place trophies will also be presented for any class with five or more, and a fourth for classes with ten or more entries.
- 22. Social Activities.** A barbecue and **live** band will highlight the social activities on Saturday evening at the Provincetown Inn. The fee for the Saturday Evening Barbeque is \$25.00 per person. Reservations and payment are to be made by July 11th. Further details will be given on the BYC website www.bostonyachtclub.net.
- 23. Mooring and Marina.** Each skipper must make his/her own reservations at the Provincetown Marina by calling 508 487-0571.

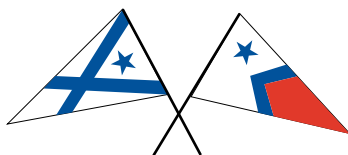
F O R T Y - S E C O N D A N N I V E R S A R Y

S.S. CROCKER MEMORIAL RACE

SATURDAY JULY 19, 2008

The 42nd Annual Crocker Race, in memory of internationally renowned yacht designer Samuel Sturgis Crocker, will be held Saturday, July 19, 2008.

Sponsored jointly by the Manchester Yacht Club and the Manchester Harbor Boat Club, the race is open to all yachts carrying U.S.C.G.-required safety equipment.



This is a fun sailing event for the skipper with little or no racing experience, as well as the seasoned racer. Come and enjoy the friendly atmosphere, excitement of competition, and tradition of this year's race.

THE SKIPPERS' MEETING will be held on Friday evening, July 18, at 1930 at Crocker's Boat Yard.

RACE START TIMES

| SIGNAL | CLASS A | CLASS B | CLASS C | CLASS D | CLASS E | CLASS F | CLASS G | CLASS H | FLAG |
|-----------------------|---------|---------|---------|---------|---------|---------|---------|---------|---------------------|
| 5-Min. Warning (gun) | 10:10 | 10:25 | 10:40 | 10:55 | 11:10 | 11:25 | 11:40 | 11:55 | Class Flag |
| 4-Min. Prep (gun) | 10:11 | 10:26 | 10:41 | 10:56 | 11:11 | 11:26 | 11:41 | 11:56 | P Flag & Class Flag |
| 1-Min. Warning (horn) | 10:14 | 10:29 | 10:44 | 10:59 | 11:14 | 11:29 | 11:44 | 11:59 | Class Flag |
| START (gun) | 10:15 | 10:30 | 10:45 | 11:00 | 11:15 | 11:30 | 11:45 | 12:00 | None |

If the 10:15 start is delayed, all other starts will be delayed by the same time.

THE COURSE: The S.S.C. Memorial Race is sailed on a triangular, windward-leeward course of 20-30 miles, using Gales Ledge Buoy, Eastern Point Whistle and Newcombs Ledge Whistle as marks of the course. Each mark is designated by a letter to simplify posting the course. The **BLUE SHAPE** at the yardarm and the **YELLOW FLAG** flying indicate the Race Committee Boat is on station at the Finish. See race circular for specific course information.

THE PARTY: Following the race, skippers and crew are invited to attend a party at the Manchester Yacht Club — chowder and munchies provided; cash bar.

TROPHIES: First Overall (S. S. Crocker Memorial Trophy) • First, Second and Third in each of the eight handicap classes • First, Second and Third Crocker Boats • S. Sturgis Crocker PHRF Memorial Trophy. All skippers receive a 42nd Anniversary Glass commemorating this race.

ADVANCE REGISTRATION REQUIRED

Information and entry forms are available at www.sscrockerrace.com

Or, contact Race Committee Chair Carl Doane at 978-526-7608.

Completed entry form must be received by the Race Committee no later than July 17, 2008.

Entry Fee: \$55.00 (US Sailing & MBSA Members, \$50.00)



SAILING INSTRUCTIONS: MBSA ORC General Sailing Instructions except as modified herein or by specific direction of the S.S. Crocker Memorial Race Committee. ORC Category 4 special regulations are waived.

SCITUATE INVITATIONAL

TWO RACES !!! SATURDAY JULY 26, 2008

Sponsor: SCITUATE SAILING

Entry To: Jim Kwiatkowski Free Beer, Food and Moorings!
216 Fairways Edge Dr
Marshfield Ma. 02050

Application can be found on Scituate Sailing Web Site (www.ScituateSailing.com)

Entry Fee: \$50.00 [\$55.00 if received after July 25, 2008]
US SAILING and or MBSA Members deduct \$5.00

Skippers Meeting: Optional :10:00 at the Satuit Boat Club. Scratch sheets available from committee boat. (Monitor VHS Channel 68)

**First Warning
Signal: 1:00 PM**

**Classes: Class Flags: A = PHRF A, B = PHRF B,
J = J-105, C = PHRF C
D = CRU F & G**



Starting Line: In the vicinity of Scituate approach gong RW"SA"MO [A.].

Please note we will be using portable marks and standard MBSA courses

Awards: First, second and third place awards for all classes!!!

Music! Dancing! Food! Fun! For Skippers and Crew!
RIGHT AFTER THE RACE

***Information call Jim Kwiatkowski 1-781-826-6377**
jkkwk@adelphia.net

Down East Challenge 2008

July 26-27

Notice of Race

Great competition and a great way of getting your boat Down East for the best part of the summer! A 130 nautical mile offshore race from Marblehead, MA to Rockland, Maine, with racing and cruising divisions as well as single handed categories. This race is a qualifier for the Bermuda One-Two Yacht Race.

Sponsors: Marblehead Yacht Club, MA and Rockland Yacht Club, ME.

Rules: This event will be governed by the Racing Rules of Sailing 2005-2008 and current US Sailing Association rules and sailing instructions. Autopilots and/or wind assisted self-steering devices are allowed. Preliminary sailing instructions and entry form will be available online at www.marbleheadyc.org.

Eligibility and scoring:

The race is open to all boats of 25 ft or more and 6.5 meter mini Transat boats with a valid PHRF handicap certificate. Yachts without a valid handicap that wish to race will be assigned an uncontested handicap by the race organizers based on similar boat types.

Divisions are offered for racing (spinnaker) and cruising (non-spinnaker) for both single and fully crewed boats. Classes within these divisions will be established following the deadline for close of entries.

Entrants must have the equipment for a Category 3 race and sign a release form. Single-handed racers must have completed a non-stop single-handed passage of at least 50 nm.

The event organizers reserve the right to reject entries at their discretion.

Skipper's Meeting: Mandatory skipper's meeting for all skippers or their designated representative at 1800 hrs at the Marblehead Yacht Club on Friday, July 25. Final sailing instructions listing navigation aids that must be respected and a scratch sheet will be provided at that time. Bring your crews for free food and drink. Boats starting the race will be moored free of charge if coordinated with the Marblehead Yacht Club dockmaster beforehand.

Start/finish: First gun will be at 1000 hrs. Saturday, July 26th, vicinity of mark C1 at the mouth of Marblehead Harbor, unless changed at the skipper's meeting. The finish will be between can #1 and the Rockland Harbor Breakwater lighthouse. Time limit for all boats will be 1600, July 27th, unless extended at the race committee's discretion.

Equipment: Vessels shall comply with ISAF Special Regulations for Category 3 races subject to the following modifications: Entrants are strongly encouraged to comply with regulation 4.20, but may at their own discretion instead carry an inflatable or rigid dingy that can accommodate all crew members and that can be readily deployed in case of emergency.

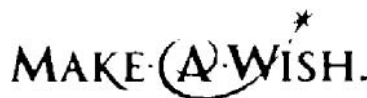
Entry: Entry forms and preliminary sailing instructions are available online at <http://www.marbleheadyc.org>, or <http://www.rocklandyc.org>. Checks and entry forms can be mailed to the Marblehead Yacht Club, 4 Cliff St., PO Box 943, Marblehead, MA 01945 by 20 July, 2008. Skippers are encouraged to sign up on line at www.marbleheadyc.org and click on the News Button where you can pay by credit card, cash, or mail-in a check. Upon registering on line, latest scratch sheets and other information will be available in the quickest possible manner.

Fees: \$75.00 if paid by 20 July; \$100.00 if late entry.

COTTAGE PARK YACHT CLUB MAKE-A-WISH REGATTA



One Day "Chase" Race Saturday, August 2
2008



Sponsored by Cottage Park Yacht Club

ENTRY FEE: \$75 (Includes two dinner tickets)

Checks payable to CPYC/Make-A-Wish Regatta

ENTRIES MUST BE RECEIVED BEFORE WEDNESDAY, JULY 30, 2008

Mail entries to CPYC/Make-A-Wish Regatta, 1 Baker Square, Winthrop, MA 02152

SIGNALS: Preparatory 11:55, Start 1200

STARTING AND FINISH LINE: Yellow Nun "E" (mark 5) 1.15 miles west of Deer Island Light

COURSES: One of the following two, to be determined by the wind speed and direction. The course will be posted and/or announced on VHF Channel 72 or at the Skipper's Meeting Friday evening.

Course A

START (Yellow Nun "E")

Flip Rock Gong (RG "FR")

Graves Whistle (FI G "5")

FINISH (Yellow Nun "E")

Total Distance 1.5NM

Course B

START (Yellow Nun "E")

Graves Whistle (FI G "5")

FINISH (Yellow Nun "E")

Total Distance 11.8NM

RATING: PHRF ratings will apply. Boats without an official rating certificate will be assigned a rating.

CLASSES: Two divisions are planned; spinnaker and non spinnaker. The non-spinnaker division may have several classes. The is subject to change depending on the number of entries.

SKIPPER'S MEETING: Friday evening August 1, 2008 at 1900 hrs. Starting time will be issued at the meeting.

DETERMINING STARTING TIME: Your starting time, not your finish time, is based upon your rating. The highest rated boat will start first (scheduled at 1200 hrs). The rating of the boat will be posted and/or announced on Channel VHF 72. Use this simple formula to determine your actual start time after 1200 hrs. The rating of the first boat—(minus your rating) x (multiply by) Total Discharge (11.8 or 15 NM) = Number of seconds after 1200 hrs that you will start. EXAMPLE; The rating of the first boat is 250, your rating is 132, and you are sailing Course A. You will start $(250-132) \times 15 = 1770$ seconds, or 29 minutes and 30 seconds after 1200 hrs. The Race Committee will announce the elapsed time periodically and will assist racers in determining their correct starting times.

THE FIRST BOAT TO FINISH WINS!

AWARDS will be presented at the Make-A-Wish dinner

SOCIAL ACTIVITIES: Additional dinner tickets may be purchased for \$25. Overnight MOORINGS are free. Dock space MAY be available at \$25.00 per night.

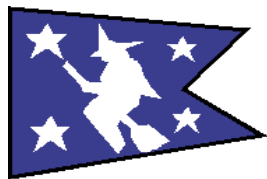


Corinthian Yacht Club

Marblehead

CYC Summer Ocean Race SAILING INSTRUCTIONS **Sunday August 3, 2008**

- 1. Introduction:** The Corinthian Yacht Club invites all yachts with valid 2008 PHRF or N.E. Multi-Hull rating certificates to the Summer Ocean Race.
- 3. Rules:** The race will be governed by the MBSA Notice of Race and General Sailing Instructions, except as these are changed by these Event Sailing Instructions.
- 4. Entries:** Send to Corinthian Yacht Club Race Committee, Corinthian Lane, Marblehead, MA 01945, no later than 1600 hours, Saturday, August 2, 2008, accompanied by a valid rating certificate and the entry fee of \$40 (\$5 discount for US Sailing members, additional \$5 discount also for MBSA members.). For those who participated in prior CYC events, on-line entry procedures are planned to be available at www.corinthianyc.org. Entries received after the deadline may be accepted at the discretion of the Race Committee, but if so, the fee will be \$50 with no discount. Contact: Julia Adam (978) 369-4830.
- 5. Notices to Competitors:** Notices to competitors will be posted on the official notice board located at the CYC Pier Head. There is no Skippers Meeting. Scratch sheets will be available at the front desk of the Corinthian Yacht Club at 0900 on the day of the event. The CYC Race Committee (RC) is under no obligation to hand out scratch sheets on the water.
- 6. Changes in Sailing Instructions:** Any changes to the General or Event Sailing Instructions will be posted on the official notice board located at the CYC Pier Head by 0900 on the day of the race.
- 7. Signals Made Ashore:** Will be displayed at the yardarm of the CYC Flagstaff.
- 8. Schedule of Races:** A single race is scheduled.
- 9. Class Flags:** A,B,C: PHRF A,B,C -- D: PHRF D & E -- F: PHRF Cru. F & G -- H: N.E. Multi-Hull
- 10. Racing Area:** In the vicinity of Tinker's Rock Gong, Mark D.
- 12. Marks:** MBSA Standard Rounding Marks, Lists A & B, or MBSA Standard Courses, using orange tetrahedrons and a black band attached to an orange tetrahedron for a change mark. If this mark is subsequently changed, it will be without the black band.
- 13. The Start:** The first Warning Signal will be made at 1200 hours.
- 14. Recalls:** The Race Committee will attempt to hail premature starters on VHF Channel 72. The failure to hail premature starters, the hail of some but not all premature starters, or the untimely hail of premature starters shall not be grounds for redress [changes RRS 62.1(a)].
- 16. Time Limit:** Five hours after the start of each class.
- 23. Prizes:** Trophies will be awarded in each class with at least three competitors. Second place trophies will be awarded for each class with at least six (6) competitors. Additional trophies will be awarded for each six (6) additional competitors in a class.
- 24. RADIO COMMUNICATION & EMERGENCY CONDITIONS:** The Race Committee will monitor VHF Channel 72 from 100 hours until the last yacht has finished the race. Emergency conditions should be reported to the Race Committee on VHF Channel 72. The CYC Dockmaster will monitor VHF Channel 9.
- 25. Hospitality:** The hospitality of the club is extended to all skippers, their crews and guests, to participate in the trophy presentations and social activities.



The Palmer's Cove Bowditch Race

Saturday August 9, 2008



You Don't Want To Miss This One...

The **Bowditch Race**, one of the races of the **Salem Bay Grand Slam Series**, and the **PHRF Marblehead Series** has now to be designated as a **MBSA Season Championship Qualifier!**

The First Warning Signal is at **2:00 pm**

If you race in a one design fleet, or other organized sailing group, and can get a min of 3 boats to the line we can give you a start. If you would like to make this race one of your fleet's season events contact:

John Devine (781) 594-3225 or (781) 710-6402

...And Don't miss our legendary post race party!

Palmer's Cove Yacht Club will host a party after the race:

- **Cookout:** hamburgers & hot dogs & lots of good munchies, Free for Skipper & Crew.
- The **SWAMPTONES** will be performing again; this is one awesome party band.
- **Skipper's Bag** of goodies for all boats registered by 8/4/08
- **Multiple Awards** for each class, **Boat of the Day Award** for both Racing & Cruising Classes and many **Sponsor added bonuses!**
- **Free Slips*** will be available in our Marina for our visitors to stay for the party or for the night.
*Limited by the number available, and by the length and draft of the yacht. Anyone wanting to take advantage of this offer should notify the PCYC Regatta Committee director@bowditch-race.com as soon as possible and preferably before 8/4/08. Slips requested beyond this date are assigned at the discretion of the PCYC Dockmaster.
- Please visit: www.bowditch-race.com or www.pcyg-salem.com

EVENT SAILING INSTRUCTIONS:

INTRODUCTION: The Palmer's Cove Yacht Club (PCYC) invites all Yachts with a valid 2008 PHRF certificate, or current NEMA rating certificate, to race in **The Palmer's Cove Bowditch Race**.

RULES: The race will be governed by the MBSA Notice of Race and General Sailing Instructions, except as these are changed by these Event Sailing Instructions.

ENTRIES: Send to PCYC Race Committee, 74 Leavitt St, Salem, MA, 01970, no later than 1700 hours, Friday, August 8, 2008, accompanied by a valid rating certificate and the entry fee of \$45 (\$5 discount for US Sailing members, and/or \$5 discount for MBSA members) made **payable to "PCYC Regatta Com."**

Entries received after the deadline may be accepted at the discretion of the Race Committee.

Contact: John Devine (781) 594-3225, (781) 710-6402.

NOTICES TO COMPETITORS: Notices to competitors will be posted on the official notice board located in the PCYC Club House. There is no Skippers Meeting.

CHANGES IN SAILING INSTRUCTIONS: Any changes to the General or Event Sailing Instructions will be posted on the official notice board located in the PCYC Club House by 0900 on the day of the race.

SCHEDULE OF RACES: A single race is scheduled.

CLASS FLAGS: A: PHRF A, B: PHRF B, C: PHRF C, D: PHRF D, E: PHRF E, F: PHRF Cru. F & G, M: NEMA.

Additional classes may be added per race committee's discretion, if entries reflect interest.

RACING AREA: In the vicinity of Tinker's Rock Gong, Mark D.

MARKS: MBSA Standard Rounding Marks, Lists A & B, or MBSA Standard Courses, using yellow cylinders.

If the Race Committee Boat is streaming a "keep-off" buoy, then that buoy, and its attachment line will be considered parts of the *mark*.

THE START: The first Warning Signal will be made at 1400 hours. The order of starts, and possible combination of some fleets, will be determined by conditions and participation. All fleets will be scored separately.

RECALLS: The Race Committee will attempt to hail premature starters on VHF Channel 69. The failure to hail premature starters, the hail of some but not all premature starters, or the untimely hail of premature starters shall not be grounds for redress [Changes RRS 62.1(a)].

TIME LIMIT: Four hours after the start.

PRIZES: First, Second and Third place Trophies will be awarded in each class. Additional trophies will be awarded for each six (6) additional competitors in a class. Boat of the Day Award for both Racing and Cruising Classes.

RADIO COMMUNICATION & EMERGENCY CONDITIONS: The Race Committee will monitor **VHF Channel 69** from 1300 hours until the last yacht has finished the race. Emergency conditions should be reported to the Race Committee on VHF Channel 69.

The **PCYC Base** and **Dockmaster** will monitor **VHF Channel 78**.

HOSPITALITY: The hospitality of the club is extended to all skippers, their crews and guests, to participate in the trophy presentations and social activities. There may be Marina space available, see above.

Note: Parking in the PCYC Lot is limited to club members' vehicles; there is on-street parking available.

MASSACHUSETTS BAY SAILING ASSOCIATION

2008 Offshore Racing Schedule

| Date | North Shore | Other | Boston/Hingham/South Shore |
|--------------------|---|--------------------------------------|---|
| Sat., May 24 | BYC Mem. Weekend Regatta (2 races) M | | |
| Sun., May 25 | | | |
| Sat., May 31 | | | |
| Sun., June 1 | EYC Lambert Ocean Race M | | |
| Sat., June 7 | | | |
| Sun., June 8 | CYC Summerset Regatta M, S, Q, J (2 races) | | |
| Sat., June 14 | | | Constitution YC Spring Regatta (2+ races) |
| Sun., June 15 | CYC Hospice of the North Shore M, Q, J | | |
| Sat., June 21 | MYC Patton Bowl Regatta M, S (2 races) | | HBPHRF Solstice Regatta H, Q |
| Sun., June 22 | | | |
| Sat., June 28 | | | BHPHRF Constitution Cup (2 races) Q, J |
| Sun. June 29 | | | |
| Fri, July 4 | EYC Annual Regatta M, S, Q, J | | |
| Sat., July 5 | | | |
| Sun., July 6 | | | |
| Fri., July 11 | Corinthian 200 - Chapman Bowl O/N Q x1.25¹ | | |
| Sat., July 12 | | | HBPHRF Scorpion Bowl H, Q |
| Sun., July 13 | | | |
| Fri., July 18 | BYC Beringer Bowl O/N M, Q x 1.25¹ | | |
| Sat., July 19 | | Crocker QP | |
| Fri., July 25 | | Race Week/NOOD | |
| Sat., July 26 | | Race Week/NOOD Downeast Challenge | Scituate Invitational Q |
| Sun., July 27 | | Race Week/NOOD | |
| Sat., August 2 | | | CPYC Make-A-Wish Regatta QP |
| Sun., August 3 | CYC Summer M | | |
| Sat., August 9 | PCYC Bowditch Race M, S, Q | Flip Flop Regatta QP | |
| Sun, August 10 | | | |
| Sat., August 16 | | | HYC Hitchcock Trophy Regatta H, Q |
| Sun., August 17 | EYC Chandler Hovey Race M | | |
| Fri., August 22 | PHRF NE ² (racing divisions below 141) | | |
| Sat. August 23 | PHRF NE ² (racing & cruising) | | |
| Sun., August 24 | PHRF NE ² (racing & cruising) | | |
| Sat., August 30 | | | CPYC JFK Regatta (2 races) Q |
| Sun., August 31 | | | |
| Mon., Sept. 1 | BYC "Wednesday's Child" Regatta QP | | |
| Sat., Sept. 6 | JYC Regatta (2 races) M, S, Q, J | | Hull YC Great Chase Race QP |
| Sun., Sept. 7 | | | |
| Sat., Sept. 13 | BYC Hodder Regatta M, S | | Constitution YC Fall Regatta (2+ races) |
| Sun., Sept. 14 | | | |
| Sat., Sept. 20 | | | HBPHRF Chowder Cup (2 races) H, Q |
| Sun., Sept. 21 | MYC Fall Series (2 races) M, Q, J | | |
| Sat., Sept. 27 | | BH Islands Reg. QP | |
| Sun., Sept. 28 | JYC Phil Small Race M, Q | | |
| Sat., October 4 | BYC Fall Regatta M (2 races) | | |
| Sat, Nov. 22 | Mass Bay Sailing Annual Awards Dinner | | |
| Thur., Jan. 1, '08 | Constitution Yacht Club New Year's Day Race – Inner Boston Harbor | | |

M=Marblehead S=Salem Bay Q=MBSA Qualifier J=MBSA J105 Qualifier QP=MBSA Pursuit Qualifier H=Hingham Bay

¹While both overnight races are Qualifiers, the multiplier of 1.25 will only be applied to the higher score.

²The PHRF NE Championship is a qualifier for all classes. It is also an event in the Hingham Bay PHRF Governor's Cup.



STURGES MARINE SERVICES

CAPT. BRENTON S. LOCHRIDGE

MARBLEHEAD, MA

BOSTON, MA

WWW.STURGESMARINESERVICES.COM

(C) 203-981-0360

Yacht Deliveries
On Water Boating Instruction

Yacht Management Programs
Captain For Hire USCG LIC.# 1080272



The Flip Flop Regatta committee invites all sailors to participate in this sixth annual regatta to support The ALLY Foundation. The race will take place at 12:00 PM on August 9th, 2008 and will be a pursuit race starting in Boston Harbor, with each boat starting on her own time.

The Flip Flop Regatta is proud to be named as a qualifying event for the new 2008 Mass Bay Pursuit Race Championship

1 - ELIGIBILITY

The Flip Flop Regatta is open to mono hull cruising/racing boats that have a current 2008 PHRF handicap assigned by PHRF NE, and are members of US Sailing and Mass Bay Racing.

2 - SKIPPER'S MEETING

The Skipper's Meeting, along with an evening of entertainment will take place under the Mount Gay Rum tent at 6:00 PM on Friday, August 8th, 2008 on Pier 4 at the Courageous Sailing Center in Charlestown, MA.

3 - RULES

The rules governing the Race Weekend are below. Racing Rules of Sailing (RRS 2001-2004). If there is a conflict, the Sailing Instructions shall take precedence.

4 - DIVISIONS and STARTING TIMES

The Flip Flop Regatta will be sailed in one or more divisions depending on the number of entries and will be a pursuit race, with each boat starting at a designated time.

5 - ENTRY PROCEDURES

Applications will be available on: www.flipflopregatta.com. Applications will also be available by emailing: race@flipflopregatta.com.

7 - FEES – SAILBOAT ENTRIES ONLY

Entry Fee: \$200. The entry fee includes a \$50 race fee and 2 bracelets, at \$75 each, ***for admission to weekend long Mount Gay Run Tent activities.***

8 - SOCIAL ACTIVITIES

Skippers, crew, and guests are invited to attend the regatta's activities on Friday and Saturday evenings. Activities include: Mount Gay Rum tent parties, live entertainment, auction, and awards ceremony.

For more information on the Flip Flop Regatta and to obtain an Entry Form, please visit: www.flipflopregatta.com or contact us at: race@flipflopregatta.com.

All proceeds from this regatta to benefit The ALLY Foundation. For more information on The ALLY Foundation, please visit: www.theallyfoundation.org.



The ALLY Foundation

www.theallyfoundation.org

Attn: Flip Flop Regatta 138 St. James Avenue, 7th Floor, Boston, MA 02116

Hitchcock Trophy Regatta
Hingham Yacht Club
Hingham, MA 02043
Saturday, August 16, 2008

Rules: The race will be governed by MBSA Notice of Race and General Sailing Instructions, except as changed by these Event Sailing Instructions.

Entries to: Bill Collins, 26 Beach Road, Hingham, MA 02043. The entry form must be accompanied by a copy of a valid rating certificate and the entry fee. Entries must be received by 2100 Hrs., Friday, August 15, 2008. Entry Fee: \$35 USSA or MBSA members. \$40 all other entries.

Notices to Competitors: Notices to Competitors will be posted on the official notice board located on the south side of the HYC Club House, immediately following the Skipper's Meeting.

Changes in Sailing Instructions: Any changes to the General or Event Sailing Instructions will be posted immediately after the Skipper's Meeting.

Skippers Meeting: Friday, August 15, 2007 1900 HR at the Hingham Yacht Club, 211 Downer Avenue, Hingham, MA.

Classes: PHRF racing and cruising divisions and class flags to be announced at Skipper's Meeting.

The Start: The first Warning Signal will be made at 1200 HRS. Races will be started by using RRS 26 with the warning signal given 5 minutes before the starting signal.

Starting Line: Races will be started using RRS 26. The starting line will be between an orange flag displayed on the race committee boat and ALLERTON BELL "3" (MARK 13), or other suitable mark determined by the Race Committee.

Marks: To be signaled at the Starting Line using MBSA Lists A & C. A portable mark may be used (designated MARK ZZ), of so, it's approximated range and bearing for the starting pin will be signaled from the RC boat.

Recalls: The Race Committee will attempt to hail premature starters on VHF Channel 71. The failure to hail premature starters, the hail of some but not all premature starters, or the untimely hail of premature starters shall not be grounds for redress (Changes RRS 29).

Time Limit: Five hours after start of each class. Boats failing to finish within the time limit will be scored "Did Not Finish". (This changes RRS 35)

Awards: The Overall Winner receives the Ethan W. Hitchcock Trophy. Trophy awards will be made for the First, Second and Third place finishers in each fleet.

Social Activities: There will be a cookout and an awards ceremony on Saturday, August 16, 2008 following the race at the Hingham Yacht Club. Moorings will be available at HYC after racing.

Additional Instructions: IRC Category Four (4) Special Regulations apply. The Race Committee will monitor VHF Channel 71 from 1130HRS. until all yachts have finished the race. Communications will not be acknowledged during the period covering the starting sequences of all fleets unless marine safety is involved.



Event Sailing Instructions
CHANDLER HOVEY RACE
EASTERN YACHT CLUB
Marblehead, Massachusetts
Sunday, August 17, 2008

3. Rules: The race will be governed by the MBSA Notice of Race and General Sailing Instructions, except as they are changed by these Event Sailing Instructions.

4. Entries: Submit a completed an entry form no later than 1200, Saturday, August 16, 2008. You may register on-line at www.easternyc.org - go to "Regatta Information 2008" and choose this regatta. Entry fee is \$40 (take a \$5 discount for US Sailing members, additional \$5 discount if also a MBSA member). Entry forms can also be found in the Mass Bay Year Book and can be sent to the EYC Race Committee, 47 Foster Street, Marblehead, MA, 01945, accompanied by a valid PHRF Certificate.

5. Notices to Competitors: Notices to competitors will be posted on the official notice board located opposite the EYC Front desk. Scratch sheets and any changes to the Sailing Instructions will be available at 0900 on race day at the EYC Clubhouse, and from the Race Committee Boat "Emerson T. Oliver" on station before the starting sequence begins. The Race Committee will monitor VHF Channel 72 from one hour before the first Warning Signal until all yachts have finished the race. Communications will not be acknowledged during the starting sequence unless marine safety is involved.

7. Signals Made Ashore: Will be displayed on the yardarm of the EYC Flagstaff.

8. Schedule of Races: One race is scheduled for each Class.

9. Class Flags: A: PHRF A; B: PHRF B; C: PHRF C; D: PHRF D & E; F: PHRF Cruising. Depending on the number of entries, some Classes may be started together.

10. Racing Area: In the vicinity of Tinker's Rock Gong, Mark D.

12. Marks: MBSA Standard Rounding Marks, Lists A & B, or MBSA Standard Courses, using orange tetrahedrons and a black band attached to an orange tetrahedron for a change of course after the start mark. If a green flag is flown no later than four (4) minutes before the start it means "Mark 1 for the class about to start will be a green tetrahedron. This applies to each rounding of Mark 1 by this class" (changes RRS 27.1 and Race Signals).

14. The Start: The first Warning Signal will be made at 1200. A second race may be started after the finish of the first race if conditions permit.

15. Recalls: The Race Committee will attempt to hail premature starters on VHF Channel 72. The failure to hail premature starters, the hail of some but not all premature starters, or the untimely hail of premature starters shall not be grounds for redress [changes RRS 62.1(a)].

20. Time Limit: Five hours after each start.

24. Prizes: Trophies will be awarded to the yacht with the best corrected time in each class with three or more entries. Second and third place trophies will be awarded to classes with six and ten or more entries, respectively. The Chandler Hovey Trophy will be awarded to the winners in Classes A and B. The Marriott Welch Trophy will be awarded to the winners in Classes C and D. The E. Denton Cook Trophy will be awarded to the winner in the Cruising Class.

TROPHY PRESENTATION AND SOCIAL EVENTS: All captains, crews and their guests are invited to attend a special social function at the Eastern Yacht Club following the race. Chowder and beer will be served, and are included in the entry fee. Trophies will be presented.

EYC PHRF SEASON PASS: This gives you registration in all of the following races; Lambert Ocean Race, Annual Regatta, and Chandler Hovey Race. Discounted entry fees are \$105 for all three events (\$90 for US Sailing Members, \$75 if MBSA Members also).

The Performance Handicap



Racing Fleet of New England

PHRF-NE Championships

Friday, Saturday & Sunday August 22, 23 & 24, 2008

Sponsors: PHRF-New England and PHRF Marblehead

Host Clubs: Boston Yacht Club, Corinthian Yacht Club and Eastern Yacht Club

Venue: yachts rated 140 and lower in the racing divisions will race Friday, Saturday and Sunday. Racing yachts with a rating of 141 and higher, plus all cruising class yachts will race Saturday and Sunday only. Similar boats with 8 or more entries will be given their own start, e.g. J 105, Frers 36, J 24. These races will count as Mass Bay qualifiers for all classes. See www.phrfne.org and/or www.massbaysailing.org web sites for further details.

Entry Fees: fees will vary according to the individual boat size and will be detailed in the Notice of Race. Deadline for entries will be August 8, 2008. A late entry fee of \$25.00 will result for all entries received after August 8, 2008. A \$10.00 reduction in the entry fee will be allowed for US Sailing members.

Entry application with payment via on line registration and credit card or sent to PHRF New England, C/O New Wave Yachts, 17 Ashland Ave., Manchester, MA 01944. Phone 978-526-9996, Fax 978-526-8155, email www.bump@newwaveyachts.com.

Captains' Meeting and Final Registration: will be 1900 hours Thursday, August 21, 2008 for **all yachts**. Location and further details will be provided in the "Notice of Race" announcement. Skipper's race packet containing full information will be distributed at that time. Captains will be held responsible for any information and/or instructions issued at the meeting and provided in the race packet.

Classes: the fleet will be divided by rating at the discretion of the Event Committee and will consist of approximately 15 boats per class. In addition one-design classes are expected. See NOR for further details

Starting Lines, Finish Lines, Time Limits and Signals: information will be provided in the Skipper's race pack. Conditions permitting there will be no limit on races each day.

Special Conditions: ORC Category 5 regulations and Mass Bay Sailing Association General Instructions will be in force except as modified in the Special Instructions for the event. The Race Committee will monitor radio channels per Special Instructions. Low point scoring will be used.

Trophies: 1st, 2nd, 3rd, 4th, 5th, and 6th place overall trophies for each class will be awarded after the races on Sunday August 26, 2007. Day prizes will be awarded at the social event club after the races

Social Activities: all captains and crew are invited to share the facilities of the Boston, Corinthian and Eastern Yacht Clubs during the weekend, Special social events are planned.



24th Annual *JFK* Regatta
Hosted By
Cottage Park Yacht Club
Saturday, August 30th 2008
A Mass Bay Qualifier



Sailing Instructions: Mass Bay Sailing Instructions except as modified herein or posted before 0800 hours, on the day of the race, at CPYC Bulletin Board.

STARTING SIGNALS: First Warning Signal 1100 hrs

CLASS: In accordance with MBSA Season Championship splits. Class flags for each class will be the code flag for the letter Class Flags. One Design starts will be designated by their class flag or class insignia.

CHECK IN: Boats are required to check-in before their first start of the day. Boats in the racing area that are not starting a second or subsequent race must notify the Race Committee before leaving the racing area. Boats that withdraw from racing must advise the Race Committee as soon as reasonably possible.

START: Vicinity of MBSA Racing Mark "M", Boston Entrance Gong RW"NC"

COURSES: Maximum of 3 races. Courses will be designated by letters or numbers from the list of the Mass Sailing Standard Racing Course. All attempts will be made to announce courses over VHF 72.

TIME LIMIT: 3 Hrs after the start of class.

SCORING: In accordance with MBSA General Sailing Instructions.

ENTRY FEES: \$50. Mass Bay Sailing & U.S. Sailing members, \$45. Make checks payable to Cottage Park Yacht Club.

PRIZES: Prizes will be presented at CPYC Annual Awards Night to be announced at a later date. Additionally the names of first place winners of each class will be added to the Perpetual JFK Trophy at CPYC.

SEND ENTRY TO: **JFK Regatta**
Cottage Park Yacht Club
One Baker Square Winthrop, MA 02152



**“Wednesday’s Child” Benefit Regatta
For PHRF Racing, Cruising
And One Design Classes
Monday September 1, 2008
Organized by the Boston Yacht Club**

*Proceeds benefit
Massachusetts
Adoption
Resource
Exchange*

This race is a qualifier for the Mass Bay Sailing Association Pursuit Race Championship. See Paragraph. 1 below.

1. Introduction: The Regatta format will be a pursuit type race, open to PHRF racing, PHRF cruising and one-design class boats and will be scored using PHRF handicap ratings. For boats with valid PHRF rating certificates the race is a qualifier for the Mass Bay Sailing Association Pursuit Race Championship.

2. Skipper’s Meeting: Monday September 1. at the Boston Yacht Club at 0930 hours. Entrants are responsible to attend this meeting to obtain all information provided at that time.

3. Rules: The regatta will be governed by the Mass Bay Sailing Association Notice of Race and the General Sailing Instructions (GSI), Para. 3, except as modified by these Event Sailing Instructions: The alternate scoring penalty of RRS 44.3 will apply except in the case of contact between yachts racing.

4. Divisions: There will be two Divisions, Spinnaker and Cruising Canvas. The Spinnaker Division must fly code flag “A” from their backstay at all times while racing.

5. Entries: Entries must be submitted at the Boston Yacht Club, 1 Front St, Marblehead, MA 01945 no later than 1700 hrs Friday, August 29th. Late entries may be accepted at the discretion of the Race Committee.

Entries must include a valid 2008 PHRF-NE rating certificate, or information on boat design and type, division entered (Spinnaker or Cruising Canvas), largest headsail (in percentage of “J”), if an inboard, type of propeller (fixed, folding or feathering) and, if in the Spinnaker Division, the largest spinnaker (in percent of “J”).

The entry fee for all boats is \$50. Contributions by check should be made to “Wednesday’s Child M.A.R.E.” (Massachusetts Adoption Resource Exchange: Tax-exempt number 042-227-431).

6. Notice to Competitors: Notices to competitors will be posted at the BYC Race Committee board by the front desk.

7. Signals Made Ashore: Signals made ashore will be displayed from the yardarm of the BYC flagpole.

8. Schedule of Races: There will be one race for both Divisions. The warning signal is scheduled for 1155 hours EDT. (See paragraph 13 below)

9. Racing Area: There will be one starting line, which will be in the vicinity of Tinkers Rock Gong Buoy, Mark D, List A.

10. Marks: Marks will be orange tetrahedrons.

11. The Start: Starting times will be assigned to each individual yacht based on its PHRF rating (Racing or Cruising) and will be announced at the skipper’s meeting, see paragraph 2 above.

12. Change of Course: There will be no change of course after the start.

13. Time Limit: The time limit for both Divisions will be 3 hours. The race committee reserves the right to extend or reduce the time limit at its discretion.

14. Scoring: Boats will be scored in their finishing order.

15. Protests: Protests must be filed on forms provided by the Boston Yacht Club and submitted no later than one hour after the Race Committee Signal Boat has docked. All protests will be heard at the Boston YC.

16. Trophies: Trophies will be presented for the first through third places in each Division. Presentations will be made at the Boston Yacht Club during the after-race party.

17. Social Activities: The BYC Gazebo, Yardarm and Main Lounge will be open after the race, offering BYC hospitality to all skippers, crew and their guests. Chowder and hot dogs will be complimentary for the first six sailors on each yacht, and the price for additional sailors or guests is \$4.00 each.

The Jubilee Yacht Club Regatta

Saturday, September 6, 2008



Jubilee Yacht Club

It's the preeminent Mass Bay qualifier of the season (at least that's how we feel about it)! Two planned races for all Mass Bay Offshore fleets, with perhaps a few other fleets thrown in just to increase the fun.

Spend the day with your crew racing on the beautiful Salem Sound, and then join family, friends, and your fellow racers back at JYC for our legendary hospitality where you can grab free food, drink, and party the summer away. Oh, and we'll hand out the awards at some point too!

The **skippers' meeting** is Friday, September 5, 2008, at 1830 in the JYC Hall where changes to the sailing instructions and other information will be announced.

The first warning for the A fleet will be at 1000 hours.

For a Notice of Race, online registration, and results: **www.jycracing.org**

Fleet breaks will be MBSA Offshore breaks. Additional fleets may be added depending upon entries.

Guest Moorings with launch service are available for Saturday and Sunday on a limited basis to participating yachts. Please contact John Kalinowski (603) 673-1554 for reservations.

Send your entry to:
JYC REGATTA COMMITTEE
c/o Jubilee Yacht Club
P.O. Box 104
Beverly, MA 01915

| Entry Fees | | Member Discounts | |
|----------------------|---------|------------------|--------|
| | | U.S. Sailing | MBSA |
| JYC Regatta, 2 races | \$60.00 | \$5.00 | \$5.00 |

| | | | | |
|--|-------------------|---------------------------------------|---|--|
| One Free Race | | First Time Racing on Thursdays | The Package Deal | |
|  | Boat Name: _____ | | Sign up and pay for the entire 2008 Thursday Night season (20 Races) and we'll include entry to both the JYC Regatta and Phil Small Regatta at no extra charge. A savings of over \$90. | |
| | Skipper: _____ | | | |
| | Boat Model: _____ | | | |
| Jubilee Yacht Club <input type="checkbox"/> Racing <input type="checkbox"/> Cruising | | Rating _____ | | |
| Thursday Night Series | | | | |

18TH ANNUAL GREAT CHASE RACE



2008



Hull Yacht Club

Saturday, September 6th 2008

Come celebrate the sport of sailing by participating in the 18th annual Great Chase Race. This year we are expecting over 100 sailing vessels of all types. This event is open to all sailors, PHRF, one design, and cruisers. If you have never competed in the Great Chase you have been missing one of the best sailing events of the season!

*** GREAT RACE * GREAT PARTY ***

How it works:

You will be given a start time based on your boats rating. The slower boats go first, the faster boats go later. The slower boats have the thrill of hanging on to the lead for as long as possible. Faster boats have the challenge of passing the whole fleet in to win. The first boat starts at 12:00. ***Seeing over 100 sailboats on one course is a great sight!***

Entry Fee: \$50.00

Additional \$5.00 per crew
If more than 5 attend party

Make check out to: **Hull Yacht Club**

Mail to: Jim Fitzgerald
33 Whitford Circle
Marshfield, MA 02050

email: J Fitzgerald@mysticmillwork.com

Captains' Meeting: 1900, Friday, September 5, Hull Yacht Club, for those who need additional info

Entry Includes:

- Regatta entry, free moorings for those spending the night
- Party: Live Band, dancing, lots of fun
- Dinner for skipper and crew (**Greater than five, please include additional \$5**)
- Awards: ***Five divisions, 1st – 5th in each division***
- Perpetual sailing club team trophy.
- ***Newly*** designed long and short sleeve 'T' shirts will be on sale.

Start: 1200 First vessel(s) begin, In the vicinity of Sheep Is, Hingham Bay. Note: Each vessel is assigned a starting time. RC will be monitoring VHF channel 71.

Sailing Instructions: 2008 race instructions and online entry will be available at www.hullyc.org starting 7/1/2008

Eligibility: No PHRF handicap required for entry, one will be assigned prior to the race. ORC Category four regulations apply.

Questions: Call Jim Fitzgerald at 781-834-4158 evenings or email J Fitzgerald@mysticmillwork.com



Event Sailing Instructions
James R. Hodder Regatta
An Ocean Race
September 13, 2008
Organized and Sponsored by the Boston Yacht Club
Marblehead Massachusetts.

Entry fees for this regatta are automatically covered by entry into the full season of the Boston Yacht Club Wednesday Evening Races. See paragraph 4 below

1. Introduction: One ocean race using either portable or government marks as appropriate for the weather conditions. This race is a qualifier for the Salem Bay Grand Slam Trophy. There will be PHRF Racing and PHRF Cruising Divisions and if three (3) or more register, for IRC Racing and Doublehanded PHRF Racing. Yachts may compete in either the PHRF Racing Division or the IRC Division, or in both.

2. Check-in Before the Start: All boats must check-in with the Race Committee using VHF channel 72 before the first Warning Signal of the day.

3. Rules: The Mass Bay Sailing Association Notice of Race and General Sailing Instructions (GSI), the ISAF Special Regulations for Offshore Racing (ORC) for Category 4 races, except as any of these are changed by this Event Sailing Instructions (ESI). IRC yachts will be governed by IRC Parts 1, 2 and 3. Class breaks for all divisions will be in accordance the Mass Bay Sailing Handbook. IRC Class breaks will be in accordance with equivalent PHRF handicaps (e.g. PHRF-A and IRC-A will sail together).

4. Entries: Entries should be submitted before 1800 hrs on September 12, together with the appropriate fee and current PHRF NE rating certificate to: **BYC Race Committee, 1 Front Street, Marblehead MA, 01945.** (Contact Geoff Smith 508 358-7542). *Boats registered in the full BYC Wednesday Evening Series and entering this race shall register their intention and division by email to: gesmith1000@comcast.net.*

Fees: \$50 less discounts of \$5 for USSA members and \$5 for MBSA members.
Fees are not required for Wednesday Evening Full Season Racers

5. Notice to Competitors: Notices to competitors will be posted on the official notice board located near the BYC front desk. The scratch list will be posted on the official notice board at 0830 hrs on Saturday September 13.

6. Changes to Sailing Instructions: Any change to the sailing instructions will be posted before 0830 hrs on the day it is to take effect, except that any change to the schedule of races will be posted by 2100 hrs on the day before it will take effect.

7. Signals Made Ashore: Signals made ashore will be displayed from the yardarm of the BYC flagstaff.

8. Schedule of Races:

Saturday, September 13: One race is scheduled. The Warning Signal will be made at 1100 hrs.

9. Class Flags: Classes shall be in accordance with the MBSA class splits. All entries shall fly the appropriate class flag from their back stay. IRC entries will also fly code flag "H".

10. Racing Area: The starting area will be in the vicinity of Tinkers Rock Gong, Mark "D"; List A of the Mass Bay Handbook, unless the Race Committee Signal Boat "Carl Alberg" displays Code Flag "L" and proceeds elsewhere.

12. Marks: Marks shall be in accordance with MBSA List A and List B. Portable marks will be orange tetrahedrons.

13. The Start: Races will be started in accordance with Paragraph 14 of the GSI. The time interval between the start of one class and the warning signal for the subsequent class will be at least one minute. Any class with less than three entries may be combined with another class for a combined start. Classes will be scored independently

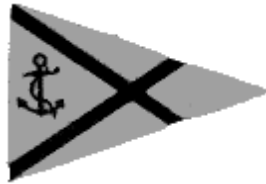
14. Recalls: Recalls will be in accordance with RRS 29. The Race Committee will attempt to hail OCS boats on VHF channel 72. Failure to hail, hail of some but not all, or untimely hail of OCS starters shall not be grounds for redress. This changes RRS 62.1(a).

15. Time Limit: Three hours after the start of each class. The Race Committee may extend the time limit, and will make such announcement VHF channel 72.

16. Scoring: The Low Point scoring system, RRS Appendix A, will apply with ¾ point for first place.

17. Prizes: The James R. Hodder Trophy will be awarded for first place in Class PHRF-A. For each class in each division, trophies for the first and second place presented after the races. Third place trophies will also be awarded for any class with ten or more entries.

18. Social Activities: After the race there will be a social get-together with entertainment, chowder and hot dogs for all Skippers their crew and guests. Yardarm facilities (bathrooms, showers, changing areas) are available to all participating sailors prior to boarding their boats and after the race.



Constitution Yacht Club 2008 PHRF Fall Regatta

***Saturday, 13 September, 2008
Boston Outer Harbor
Multiple races***

SPONSOR: Constitution Yacht Club

ENTRY FEE: \$40.00 (\$5 discount for US Sailing members, additional \$5 discount for MBSA members.)

ENTRIES & QUESTIONS TO:

Greg Graham, Fleet Captain
38 Shirley Road
Waltham, MA 02452
781.258.7696, e-mail: gtgraham@rcn.com

SAILING INSTRUCTIONS: Will be posted on the CYC web site www.cycboston.org. Also available by fax if requested, and from the RC Boat until 5 minutes prior to Warning.

STARTS: Warning Signals at 1130 for first race, others 5–10 minutes after last boat finishes. Starts in the vicinity of yellow Nun "Y" at the southwest corner of President Roads, unless announced differently by the RC.

COURSES: Marks to be posted on RC Boat. Courses will be multiple laps as posted.

FINISH: The finish line lies between the RC boat and the pin. All races will start and finish in the outer harbor.

TIME LIMITS: 4 hours per series.

CLASSES & SCORING: Races will be sailed and scored (Rinderle "B") as a single class. The fleet may be split into two sub-classes with trophies awarded in each sub-class.

A current PHRF certificate is required. Yachts may sail the races either as "racing" or "cruising" per their certificates. The RC will monitor channel 69.

SOCIAL ACTIVITIES: Will be announced in the Sailing Instructions.

Remember: The 2009 New Year's Day Race: 1 January 2009 at 1200 in the Inner Harbor



Chowder Cup

Sponsored by Eastern Yacht Sales
(MBSA and Hingham Bay Governors Cup Qualifier)

Saturday, Sept 20

Two Races - One Day

| | |
|---------------------------|--|
| Starting Line: | Rendezvous in the vicinity of mark "32" Hospital Shoal Can. Race Committee will lead the starters to the starting area. |
| Starting Time | Rendezvous at 11:00 AM |
| Time Limit: | 5:00 PM. |
| Awards: | First, Second, Third place trophies in each class to be presented after the race at the Wessagusset Yacht Club. |
| Social Activities: | All Skippers and Crews are invited by Eastern Yacht Sales back to the Wessagusset Yacht Club for Chowder, Desert and Awards. |

Additional Sailing Instructions

Rules: Races will be governed by the MBSA General Sailing Instructions except as modified in the Hingham Bay Racing Circular, herein, or by the race committee.

Classes:

| | |
|----------|----------|
| Racing | |
| A: | MBSA A,B |
| B: | MBSA C |
| C: | MBSA D,E |
| Cruising | |
| F: | MBSA F |
| G: | MBSA G |

Flags: Boats should fly their class flag from the backstay.

Race Committee: The RC will monitor channel 68. Yachts must notify the RC if withdrawing.

For latest updates, scratch sheets and results check our web site www.hbphrf.org

Race Information: Any changes to the sailing instructions or notices to competitors will be posted at www.hbphrf.org 3 hours prior to the scheduled race start. There will be no captains' meeting.

Trophies: Trophies for 1st, 2nd and 3rd place will be awarded at the party after the event.

For information:

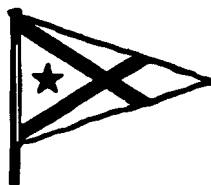
David Nelson 781-297-9236
Email: dmch.nelson@verizon.net

Entry to:

Mail to: P.O. Box 540,
Hingham, MA 02043 or register on-line
at www.hbphrf.org

Entry Fee:

\$35.00 - MBSA, USSA Discount \$5.00
HB PHRF Seasons and Weekend Pass
FREE(must register on-line or via mail)



MANCHESTER FALL SERIES

Manchester Yacht Club



Two Races – Sunday, September 22, 2008

- 1. Introduction:** The Manchester Yacht Club (MYC) invites all yachts with a valid PHRF or Multi-Hull rating certificate to participate in the Manchester Fall Series and then to an awards social at the MYC immediately following the race.
- 2. Check-in Before Start:** All boats must check-in with the race committee using channel 72 before the first warning signal of the day.
- 3. Rules:** The races are governed by the MBSA Notice of Race and General Sailing Instructions, except as changed by these Event Sailing Instructions.
- 4. Entries:** Send to MYC Race Committee, Manchester Yacht Club, P.O. Box 266, Manchester, MA 01944. Entries must be received by 1900 hours September 19th and be accompanied by a valid PHRF certificate and entry fee of \$45.00 payable to Manchester Yacht Club. (\$5 discount for US Sailing members, additional \$5 discount for MBSA members.) Late entries at discretion of Race Committee (\$5.00 late fee). Contact: Emmett Holt (978) 468-3355, email race@manchesteryachtclub.org.
- 5. Notices to Competitors:** Notices will be posted on the board at the Clubhouse. The Race Committee will also monitor VHF 72 starting at 1000 on the day of the race until the last finish. Scratch sheets and any changes to the Sailing Instructions will be available from the race committee boat "TRIDENT" on station before the first warning signal of the day.
- 6. Signals Made Ashore:** Any signals will be displayed at the MYC flagstaff.
- 7. Schedule of Races:** Two races are scheduled. The first Warning Signal will be made at 1100. The second race will start as soon as possible after the first race.
- 8. Classes and Class Flags:** Classes will be accordance with MBSA class splits. "J" flag will designate the J105 class. "H" flag will designate NE Multi-Hull class which will start last. All classes shall display the appropriate class flag from their backstay. Depending on the number of entries, some classes may be combined for a joint start. Classes will be scored independently.
- 9. Racing Area:** The Racing Area will be in the vicinity of Gales Ledge Nun Buoy RN "6" unless the race committee boat "TRIDENT" displays code flag "L" and proceeds elsewhere. Racers are reminded to observe the RESTRICTED AREAS around Bakers Island as listed in the MBSA book page 16. Yachts shall not traverse the area bounded by a line connecting the following buoys in the sequence listed: Bell G"9" (Powers Rock), Salem Channel Cans: 7, 5 & 3, Nuns 2 & 4 south of Baker's Island, Can 5 (Popes Head), Bell G"9" (Powers Rock). Yachts entering this area must leave between the same two boundary buoys that they pass while entering, unless a listed mark is a rounding mark.
- 10. Marks:** Marks will be in accordance with MBSA lists A and B. Portable marks will be orange tetrahedrons.
- 11. The Start:** The first Warning Signal will be made at 1100. The time interval between the start of one class and the warning signal for the subsequent class will be at least one minute.
- 12. Recalls:** The Race Committee will attempt to hail premature starters on VHF 72. Failure to hail any or all premature starters shall not be grounds for redress; this alters RRS 62.1(a).
- 13. Time Limit:** The time limit for each race shall be 2 ½ hours measured from the start of each class. Time limit may be extended by Race Committee on VHF 72.
- 14. Prizes:** First place trophies will be awarded in each class with at least three starters. Second and third place trophies will be awarded for each class with six and ten or more starters, respectively.
- 15. Social Activities & Awards:** All captains, crews and their guests are invited to the Manchester Yacht Club following the race at approximately 1630. There will be a cash bar along with free chowder and refreshments. Trophies will be presented.



Boston Harbor Islands Alliance
presents
The 4th Annual Boston Harbor Islands Regatta
Saturday, September 27, 2008



Friday, September 26

1800 Capt's Meeting & Reception
 1900 Pre-race Dinner

**Saturday, September 27 –
 Georges Island**

1000 Club & Non Spinnaker
 1100 Divisions 1-4 PHRF Starts Begin
 1500 Post-race Cookout and Awards

(Moorings & Launch Service
 available.)



**Family Activities
 all day on Georges
 Island!**

Live Dixieland Music,
 Tours of Ft. Warren,
 Fishing Lessons too!

Hourly ferry service to
 Georges Island from
 various Mass Bay points.

111 boats raced in the 2007 • The Boston Harbor Islands Pursuit Race
Last chance to win the Mass Bay Pursuit Race Circuit Championship

**Bowls for Overall Winners of Spinnaker & Non-Spinnaker Yachts, Trophies in 4 PHRF Divisions,
 Classic Yachts, Best YC team, Top Masters, Female & Youth Skippers and
 Best Community Sailing Program**

**One-Design Class Trophies for 210, J/105, T-Birds, J/22, J/24, Sonar
 Download Invitation, Sailing Instructions & Enter**

www.bostonharborislandsregatta.com

All proceeds from this event support Boston Harbor Islands Alliance's mission to promote the use, enjoyment, and awareness of the Boston Harbor Islands national park area by creating vibrant public spaces, facilities, and programming on the islands, raising and managing the public and private resources necessary to do so.

The JYC Phil Small Race

Sunday, September 28, 2008



Jubilee Yacht Club

It's the last chance to wrap up some points with the final MBSA qualifier of the season. One ocean race is planned for all Mass Bay Offshore fleets.

Steady autumn breezes, crisp air and hot competition make for a thrilling wrap-up to the racing season. Bring your boat, bring your crew and bring your appetite for the wrap-up party back at JYC after the race. But don't bring your American Express – it's a cash bar.

The **skippers' meeting** is Sunday, September 28, 2008, at 0900 in the JYC Hall where changes to the sailing instructions and other information will be announced.

The first warning for the A fleet will be at 1100 hours.


For a Notice of Race, online registration, and results visit: www.jycracing.org

Fleet breaks will be MBSA Offshore breaks. Additional fleets may be added depending on entries.

Guest Moorings with launch service are available for Saturday and Sunday on a limited basis to participating yachts. Please contact John Kalinowski (603) 673-1554 for reservations.

Send your entry to:
JYC REGATTA COMMITTEE
c/o Jubilee Yacht Club
P.O. Box 104
Beverly, MA 01915

| Entry Fees | | Member Discounts | |
|-----------------|---------|------------------|--------|
| | | U.S. Sailing | MBSA |
| Phil Small Race | \$40.00 | \$5.00 | \$5.00 |

| | | | |
|---|--|---|---|
| <h2>One Free Race</h2>  <p>Jubilee Yacht Club <input type="checkbox"/> Racing <input type="checkbox"/> Cruising Rating _____</p> <p>Thursday Night Series</p> | | <p>First Time Racing on Thursdays</p> <p>Boat Name: _____</p> <p>Skipper: _____</p> <p>Boat Model: _____</p> | <p>The Package Deal</p> <p>Sign up and pay for the entire 2008 Thursday Night season (20 Races) and we'll include entry to both the JYC Regatta and Phil Small Regatta at no extra charge. A savings of over \$90.</p> |
|---|--|---|---|



Event Sailing Instructions
BYC Fall Regatta
October 4, 2008
Organized and Sponsored by the Boston Yacht Club
Marblehead, Massachusetts

Entry fees for this regatta are automatically covered by entry into the full season of the Boston Yacht Club Wednesday Evening Races. See paragraph 4 below.

- 1. Introduction:** It is planned to run two relatively short PHRF handicap races using Government marks in the proximity of Marblehead Harbor and Salem Bay. This race is a qualifier for the PHRF Marblehead Championship Trophy.
- 2. Check-in Before the Start:** All boats must check-in with the Race Committee using VHF channel 72 before the first Warning Signal of the day.
- 3. Rules:** The Mass Bay Sailing Association Notice of Race and General Sailing Instructions (GSI) will govern the regatta, except as any of these are changed by the Sailing Instructions (ESI).
- 4. Entries:** Entries should be submitted before 1800 hrs on October 3, together with the appropriate fee and current PHRF NE rating certificate to: **BYC Race Committee, 1 Front Street, Marblehead, MA. 01945.** (Contact Geoff Smith 508 358-7542). *Boats registered in the BYC Wednesday Evening Series and entering this race shall register their intention and division by email to: gesmith1000@comcast.net*
Fees: \$50 less discounts of \$5 for USSA members and \$5 for MBSA members.
Fees are not required for boats registered for the full Wednesday Evening Series
- 5. Notice to Competitors:** Notices to competitors will be posted on the official notice board located near the front desk. The scratch list will be posted on the official notice board at 0830 hrs on Saturday, October 4.
- 6. Changes to Sailing Instructions:** Any change to the sailing instructions will be posted before 0830 hrs on the day it is to take effect, except that any change to the schedule of races will be posted by 2100 hrs on the day before it will take effect.
- 7. Signals Made Ashore:** Signals made ashore will be displayed from the yardarm of the BYC flagstaff.
- 8. Schedule of Races:** Two races are scheduled. The Warning Signal for the first race will be made at 1100hrs. The second race will start after the finish of the first race.
- 9. Class Flags:** MBSA class splits shall be used. All entries shall fly the appropriate class flag from their backstay.
- 10. Racing Area:** The starting area will be in the vicinity of Marblehead Channel Bell Buoy, Mark "5" of the Mass Bay Handbook List B, unless the Race Committee Signal Boat "Carl Alberg" displays Code Flag "L" and proceeds elsewhere.
- 12. Marks:** As identified in MBSA List A and List B. Portable marks will be orange tetrahedrons.
- 13. The Start:** Races will be started in accordance with Paragraph 14 of the GSI. The time interval between the start of one class and the warning signal for the subsequent class will be at least one minute. Any class with less than three entries may be combined with another class for a combined start. Classes will be scored independently.
- 14. Recalls:** Recalls will be in accordance with RRS 29. The Race Committee will attempt to hail OCS boats on VHF channel 72. Failure to hail, hail of some but not all, or untimely hail of OCS starters shall not be grounds for redress (changes RRS 62.1(a)).
- 15. Time Limit:** Two hours after the start of each class in the first race and one and one half hours for the second race. The Race Committee may extend the time limit, and will make such announcement VHF channel 72.
- 16. Scoring:** The Low Point scoring system, RRS Appendix A, will apply with $\frac{3}{4}$ point for first place. One race shall be completed to constitute the series. No race score will be excluded for the series score (Changes RRS A2). Combined corrected times will be used to break series ties.
- 23. Prizes:** Albert Trowbridge Trophy will be awarded for first place in Class A and the Herman W. Friend Trophy for first place in Class B. For each class, keeper trophies for the first place in each race and the first and second place for the combined races will be presented after the series. Third place trophies will also be awarded for any class with ten or more entries.
- 24. Social Activities:** The BYC Gazebo, Yardarm and Main Lounge will be open after the race, offering BYC's hospitality to all Captains their crew and guests. BYC's acclaimed chowder and hot dogs will be served. The Yardarm facilities (bathrooms, showers, changing areas) are available to all participating sailors prior to boarding their boats and after the race.

APPENDIX

- Season Notice of Race & Sailing Instructions
- MBSA Standard Courses
- MBSA Standard Rounding Marks
 - List A Massachusetts Bay
 - List B Salem Bay
 - List C Greater Boston/Hingham Harbor
- Rinderle B Table, and 2008 Mass Bay Class Splits
- US SAILING Judges & Umpires – Massachusetts
- Submitting Appeals – MBSA Appeals Committee
- Double Handed Sailing Information & Guidelines
- Schedule of Sailing Events in Mass Bay
 - Area A – Men’s and Women’s Quarter Finals
 - Mass Bay Junior Sailing Schedule
 - One Design Class Events & Host Organization
 - Marblehead One-Design Events
- MBSA Race Entry Form

2008 Offshore Racing Schedule

- U.S. Offshore Championship – Lloyd Phoenix Trophy

SEASON NOTICE OF RACE

and

GENERAL SAILING INSTRUCTIONS

1. Introduction

- A. The yacht clubs and sailing associations of Mass Bay Sailing Association (MBSA) plan to sponsor races and regattas, and they invite you to participate.
- B. The yacht clubs and sailing associations are the *Organizing Authority* (OA) of their respective *Events* (races, regattas and/or series). The OA shall have the authority to set the conditions of the *Event(s)* and to modify these General Sailing Instructions (GSI).

2. General

- A. Each boat owner is responsible for the safety of his or her boat, crew and guests. By entering an *Event* or participating therein, each boat owner warrants and represents for the benefit of his or her crew and guests, the *organizing authorit(y)(ies)*, club(s), participants and spectators of the *Event* that:
 - (1) His or her boat is seaworthy including, but not limited to, the soundness of the hull, spars, rigging, sails and all gear and equipment.
 - (2) His or her crew is experienced and in good physical condition to safely and properly participate in the *Event*.
- B. Each boat owner and crew member acknowledges that he or she participates in an *Event* at his or her own risk, and warrants and represents that he or she will comply with all applicable rules and regulations of the *OA* and any applicable state and federal laws. Each boat owner and crew member agrees to grant *OA* a waiver of any loss or liability arising from participation by the boat owner and/or crew member(s) in any *Event*.
- C. Each skipper is responsible for the conduct of his or her crew during any *Event*. Conduct deemed by the *OA* or host club as unbecoming a yachtsman may result in action under RRS 69.

3. Rules

- A. The *Event(s)* will be governed by The Racing Rules of Sailing (RRS), the ISAF Special Regulations Governing Offshore and Oceanic Equipment and Preparation (SRGOOE) including the prescriptions of US SAILING, the current Mass Bay Sailing Association Year Book (including, but not limited to, the Schedule of *Events*), PHRF-NE Policy, Procedures and Bylaws, MBSA Standard Rounding Marks and MBSA Standard Courses), these General Sailing Instructions and Event Sailing Instructions (EIS), except as any of these are changed by the Event Sailing Instructions (ESI) for each *Event*. Unless otherwise specified in the ESI:
 - (1) Each *Event* will be SRGOOE Category 5.^(1.)
 - (2) Each *Event* will be Advertising Category C.

1. Event organizers should refer to IFSA Special Regulations Governing Offshore and Oceanic Equipment and Preparation (SRGOOE) Appendix H and J. to designate the appropriate SRGOOE category to be included in Event Sailing Instructions.

- B Except when starting, rounding or passing marks, or finishing, when a race is scheduled to continue after sunset, the International Regulations for the Prevention of Collision at Sea (IRPCAS) will replace the Rules of Part II of the Racing Rules of Sailing (RRS) one hour after the start of the first class.
- C. All competing boats shall have auxiliary power and a VHF transceiver.
- D. Boats racing in classes designated as *cruising* (non-spinnaker) will be subject to the following additional regulations:
 - (1) Boats shall declare up to three headsails that will be flown fully attached to the headstay and of windward genoa design.
 - (2) Except for cutter-rigged boats, only one headsail may be flown at one time unless in the process of a sail change involving that sail.
 - (3) Cutter-rigged boats may fly staysail and genoa but only one of each at the same time. The staysail will not count as a declared headsail.
 - (4) Yawls, ketches and schooners may only race using mizzen sail, mizzen staysail, mainsail and one headsail at any one time, unless cutter-rigged.
 - (5) Cat-rigged boats shall not fly any sail in the foretriangle.

4. Entries

- A Eligible boats may be entered for each *Event* by completing registration with the OA. Entry Forms can be found at the back of the MBSA Year Book or OA's may have on line entry forms and procedures. The entry fee is payable to the *Event* OA and must be paid in order to be scored. The entry deadline shall be specified in the Event Sailing Instructions (ESI). No refunds will be made if an entry is withdrawn after the entry deadline specified in the ESI.
- B Ratings to be used shall be Performance Handicap Racing Fleet (PHRF-NE) or as specified in the ESI.
- C Each boat entering an *Event* shall provide the OA with a valid copy of the appropriate rating certificate.

5. Notices to Competitors

The procedure for notices to competitors shall be specified in the ESI.

6. Changes in Sailing Instructions

Unless otherwise specified in the ESI, any change to the sailing instructions will be posted before 0800 on the day it will take effect, except that any change to the schedule of races will be posted by 1800 on the day before it will take effect.

7. Signals Made Ashore

The location for Signals Made Ashore, if any, shall be specified in the ESI.

- A. When flag AP is displayed ashore, '1 minute' is replaced with 'not less than 60 minutes' in the race signal AP.
- B. The meaning for any additional Signals Made Ashore shall be specified in the ESI.

8. Schedule of Races

- A. The schedule of Races shall be specified in the ESI.
- B. Unless otherwise specified in the ESI, no warning signal will be made after 1600 on the last day of an *Event*.

9. Class Flags

Each boat shall display, from her backstay or a stern staff, the class flag for the class in which she is competing, as specified in the ESI, commencing with, or prior to, her warning signal until she finishes.

10. Racing Area and Check-In

- A. The racing area shall be specified by the ESI.
- B. Boats shall check in with the Race Committee Signal Boat before their first start each day. Boats that fail to check in may be scored DNS for that race (changes RRS 63.1 and A5).

11. The Course

- A. Courses will either be taken from MSBA Standard Courses, from MSBA Standard Rounding Marks, List A, B or C or composed of a list of marks issued by the Event organizers.
- B. Course signals will be displayed prior to or with the Preparatory Signal (changes RRS 27.1).
- C. Courses taken from MSBA Standard Rounding Marks, List A, B, or C will be designated by letters or numbers displayed by the committee boat, either in a rack or by code flags. Marks shall be rounded, and the finishing mark passed, in the order displayed, reading from top to bottom.
 - (1) The finishing line shall be at the last posted mark, or, to provide for simultaneous rounding of a nearby mark and finishing by separate classes, the finishing line may be set slightly (approximately 100 yards) beyond the windward or leeward mark as applicable. If a separate finishing mark is set, the nearby windward or leeward mark is not a mark of the course for the final leg.
 - (2) Code Flag "T" indicates that the posted course is to be sailed twice. The starting mark is not included unless it is also a posted mark of the course.
 - (3) When a portable windward mark is used, the approximate compass bearing and distance from the starting mark will be displayed.
 - (4) When code flags are used, 1st Substitute duplicates the first flag in the hoist, 2nd Substitute duplicates the second flag and 3rd Substitute duplicates the third flag in the hoist
 - (5) If, from the rhumb line to a mark, the rhumb line course to the next mark lies to starboard, the mark shall be left to starboard; otherwise (including reciprocal headings) the mark shall be left to port. These rhumb lines shall be drawn to include any relevant restricted area marks that have a required side.
- D. The MBSA Standard Courses (including diagrams and footnotes) show the courses, including the approximate angles between legs, the order in which marks are to be passed, and the side on which each mark is to be left. The approximate compass bearing and approximate distance from the Starting Mark to Mark 1 will be displayed from the race committee signal boat.
 - (1) To provide for simultaneous rounding of the leeward mark and starting by separate classes, the starting mark may be set slightly (approximately 100 yards) to leeward of the leeward mark.
 - (2) *Offset Mark*: An offset mark may be in place for the first rounding of Mark 1. The offset mark will be the same color as Mark 1. Boats shall pass Mark 1 to port and then pass the offset mark to port. For subsequent roundings of Mark 1, the offset mark is not a mark of the course.

- (3) To provide for simultaneous rounding of a nearby mark and finishing by separate classes, the finishing mark may be set slightly (approximately 100 yards) beyond the windward or leeward mark as applicable. If such a separate finishing mark is set, the nearby windward or leeward mark is not a mark of the course for the final leg.

12. Marks

Marks will either be:

- A. As identified in the MBSA Standard Rounding Marks List A, B, C, from a list specified in the EIS or
- B. As identified in the ESI (as when inflatable marks are used with MSBA Standard Courses).

13. Areas that are Obstructions

Unless otherwise specified in the ESI, the Passing or Boundary Marks (Restricted Areas) contained in MBSA Standard Rounding Mark Lists A, B & C are hereby incorporated by reference and apply during all races.

14. The Start

- A. Unless otherwise specified in the ESI, races will be started using RRS 26.
- B. The starting line will be between a staff from which an orange or yellow flag or shape is displayed on the race committee boat and a nearby Mark.
- C. Each boat shall keep clear of the “Starting Area” and first leg of the course for the period commencing at the preparatory signal for the first class to start and ending with her own preparatory signal.
- D. The “Starting Area” is defined as a box whose top extends one-half the length of the starting line past either end of the starting line and whose sides are one half of the length of the starting **line behind the starting line.**

15. Recalls

Any procedures for recalling boats (either individually or generally) other than, or in addition to, RRS 29 shall be specified in the ESI.

16. Change of Course After the Start

- A. For races using MBSA Standard Rounding Mark Lists A, B or C (Government Marks), a change of course after the start will be signaled before the leading boat has begun the leg. The Race Committee will display the approximate compass bearing to the new mark and the letter or number identifying the new mark. The mark at which the change of course is being signaled shall be rounded in accordance with SI 11.C. (3), as if the course had **NOT** been changed.
- B. For Races using MSBA Standard Courses, changing the next leg of the course shall be in accordance with RRS 33

17. The Finish

- A. The finishing line will be between a staff from which an orange or yellow flag or shape is displayed on a race committee boat and the nearby mark.
- B. Each boat is also responsible for taking her own time and, if possible, the names or sail numbers of the boats immediately ahead and astern. This information shall be provided to the race committee upon request.
- C. If the race committee intends to start another race on the same day, it will display the Second Substitute (with no sound) while boats are finishing.

18. Retiring

In the event of an emergency or if a boat withdraws either the boat or associated support boat shall notify the race committee as soon as practicable.

19. Penalty System

The Scoring Penalty, RRS 44.3, will apply.

20. Time Limit

- A. Any Time Limit(s) shall be specified in the ESI, stated as a number of hours and minutes after the actual starting time of each class.
- B. Any Finishing Window(s) shall be specified in the ESI stated as number of minutes after the first boat in each class *finishes*.
- C. If a Finishing Window applies, boats failing to finish within the finishing window or within the time limit, whichever is later, will be scored Did Not Finish (changes RRS 35).

21. Protests

- A. Protests may be written on forms available at the OA and shall be delivered there within one (1) hour after the race committee finish boat, for the race in which the protesting boat competed, docks.
- B. Protests will be heard in approximately the order of receipt as soon as possible.
- C. Protest notices will be posted, in accordance with the Notice to Competitors provisions in the ESI, within 30 minutes after the protest time limit to inform competitors where and when there is a hearing in which they are parties to a hearing or named as witnesses. This constitutes the notice required by RRS 63.2
- D> On the last day of the regatta a request for reopening a hearing shall be delivered (Changes RRS 62.2 and RRS 66)
 - (1) within the protest time limit if the party requesting reopening was informed of the decision on the previous day.
 - (2) no later than 30 minutes after the party requesting reopening was informed of the decision on that day.

22. Scoring

- A. Unless changed in ESI:
 - (1) No race scores will be discarded.
 - (2) One race is required to constitute a series.
 - (3) Series score ties are in accordance with RRS A8.1. When a tie still remains, it will be broken in favor of the yacht with the lowest total corrected time for all races. For a yacht scored BFD, DGM, DNC, DNF, DNS, OCS, RAF, SCP, TLE (Time Limit Expired), or DSQ her corrected time in that race shall be the corrected time of the yacht finishing last in that class plus one minute (changes RRS A8.2).
- B. Race scores will be based on corrected time, using MBSA Class Splits.
- C. When MBSA Standard Courses are used, the posted distance, adjusted for starting marks beyond the leeward mark, wing marks and finish lines beyond the windward or leeward marks, if any, will be official for scoring purposes.
- D. When MSBA Standard Rounding Marks, List A, B or C are used, the distance as measured from the mark positions, adjusted for starting marks beyond the leeward mark, finish lines beyond the windward or leeward marks, if any, and fixed obstructions such as islands and passing and boundary marks, if any, will be official for scoring purposes. If an obstruction may be passed on more than one side the shorter distance shall be used.

E. Each OA will inform all *Event* entrants of the race results within two weeks. Failure to do so may cause the elimination of the *Event* as a qualifying *Event* for any fleet standings.

23. Support Boats

Team leaders, coaches and other support personnel, who are not part of the boat's crew, shall not be in the racing area from the time of the preparatory signal for the first class to start until all boats have finished or the race committee signals a postponement, general recall or abandonment. The penalty for failing to comply with this requirement may be the disqualification of all boats associated with the support personnel who do so.

24. Prizes

Prizes shall be as specified by the ESI.

25. Disclaimer of Liability

Competitors participate in the regatta entirely at their own risk. See RRS 4, Decision to Race. The OA will not accept any liability for material damage or personal injury or death sustained in conjunction with or prior to, during, or after the regatta.

Rinderle B Table

SCORING: Points are awarded to each yacht using the Mass Bay Offshore Scoring system (Rinderle B table below). All events will be scored based upon the yacht's finishing place in the event as reported by the Organizing Authority.

Number of Starters

| 1 | 2 | 3 | 4 | 5 | 6 | 7 | 8 | 9 | 10 | 11 | 12 | 13 | 14 | 15 | 16 | 17 | 18 | 19 | 20 | Place |
|------|------|------|------|------|------|------|------|------|------|------|------|------|------|------|------|------|------|-------|-------|-------|
| 79.1 | 81.3 | 83.6 | 85.8 | 87.8 | 89.6 | 91.2 | 92.6 | 93.9 | 95.0 | 96.0 | 96.9 | 97.6 | 98.2 | 98.7 | 99.2 | 99.5 | 99.8 | 100.0 | 100.1 | 1 |
| | 10.5 | 43.0 | 56.8 | 65.0 | 70.7 | 75.0 | 78.5 | 81.3 | 83.6 | 85.6 | 87.3 | 88.7 | 89.9 | 91.0 | 91.9 | 92.7 | 93.3 | 93.9 | 94.3 | 2 |
| | | 10.5 | 33.7 | 46.9 | 55.7 | 62.1 | 67.1 | 71.2 | 74.5 | 77.3 | 79.6 | 81.6 | 83.3 | 84.8 | 86.1 | 87.2 | 88.1 | 89.0 | 89.7 | 3 |
| | | | 10.5 | 28.7 | 40.6 | 49.2 | 55.8 | 61.1 | 65.3 | 68.9 | 71.9 | 74.5 | 76.7 | 78.6 | 80.3 | 81.7 | 83.0 | 84.1 | 85.0 | 4 |
| | | | | 10.5 | 25.6 | 36.3 | 44.5 | 50.9 | 56.2 | 60.6 | 64.3 | 67.4 | 70.1 | 72.4 | 74.5 | 76.2 | 77.8 | 79.1 | 80.4 | 5 |
| | | | | | 10.5 | 23.4 | 33.2 | 40.8 | 47.1 | 52.2 | 56.6 | 60.3 | 63.5 | 66.2 | 68.6 | 70.7 | 72.6 | 74.2 | 75.7 | 6 |
| | | | | | | 10.5 | 21.8 | 30.7 | 37.9 | 43.9 | 48.9 | 53.2 | 56.8 | 60.0 | 62.8 | 65.3 | 67.4 | 69.3 | 71.0 | 7 |
| | | | | | | | 10.5 | 20.6 | 28.8 | 35.5 | 41.2 | 46.1 | 50.2 | 53.8 | 57.0 | 59.8 | 62.3 | 64.4 | 66.4 | 8 |
| | | | | | | | | 10.5 | 19.6 | 27.2 | 33.5 | 38.9 | 43.6 | 47.7 | 51.2 | 54.3 | 57.1 | 59.5 | 61.7 | 9 |
| | | | | | | | | | 10.5 | 18.8 | 25.9 | 31.8 | 37.0 | 41.5 | 45.4 | 48.8 | 51.9 | 54.6 | 57.1 | 10 |
| | | | | | | | | | | 10.5 | 18.2 | 24.7 | 30.4 | 35.3 | 39.6 | 43.4 | 46.7 | 49.7 | 52.4 | 11 |
| | | | | | | | | | | | 10.5 | 17.6 | 23.7 | 29.1 | 33.8 | 37.9 | 41.6 | 44.8 | 47.8 | 12 |
| | | | | | | | | | | | | 10.5 | 17.1 | 22.9 | 27.9 | 32.4 | 36.4 | 39.9 | 43.1 | 13 |
| | | | | | | | | | | | | | 10.5 | 16.7 | 22.1 | 26.9 | 31.2 | 35.0 | 38.4 | 14 |
| | | | | | | | | | | | | | | 10.5 | 16.3 | 21.5 | 26.0 | 30.1 | 33.8 | 15 |
| | | | | | | | | | | | | | | | 10.5 | 16.0 | 20.9 | 25.2 | 29.1 | 16 |
| | | | | | | | | | | | | | | | | 10.5 | 15.7 | 20.3 | 24.5 | 17 |
| | | | | | | | | | | | | | | | | | 10.5 | 15.4 | 19.8 | 18 |
| | | | | | | | | | | | | | | | | | | 10.5 | 15.2 | 19 |
| | | | | | | | | | | | | | | | | | | | 10.5 | 20 |

Mass Bay Class Splits

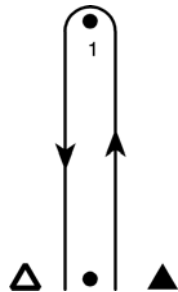
Racing Classes

Class A Up to 65
 Class B 66 - 100
 Class C 101 - 140
 Class D 141 - 170
 Class E 171 and up

Cruising Classes

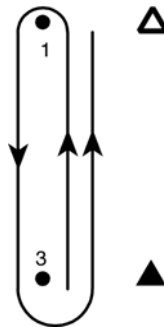
Class F Up to 155 (cruising)
 Class G 156 and up (cruising)

MBSA Standard Courses



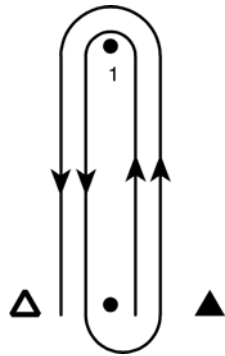
Course A

Start – Mark 1 - Finish



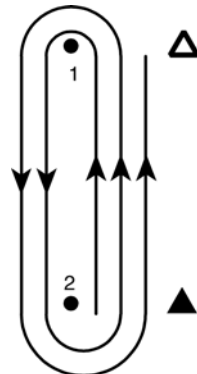
Course B

Start – Mark 1 – Leeward Mark - Finish



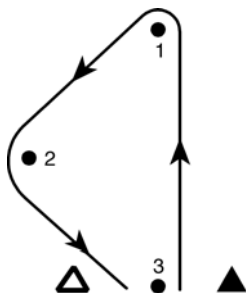
Course C

Start – Mark 1 – Leeward Mark – Mark 1 -
Finish



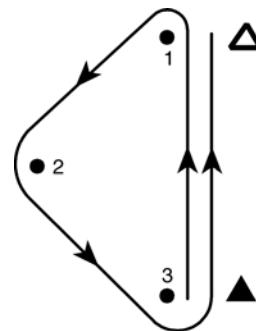
Course D

Start – Mark 1 – Mark 2 – Mark 1 –
Mark 2 - Finish



Course E

Start – Mark 1 – Mark 2 - Finish



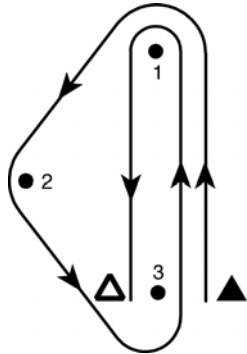
Course F

Start – Mark 1 - Mark 2 – Mark 3 - Finish



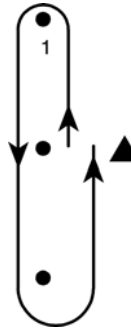
The Passing or Boundary Marks (Restricted Areas) contained in MBSA Standard Rounding Mark Lists A, B & C are hereby incorporated by reference and unless specified otherwise by the ESI, apply during all races run using MBSA Standard Courses.

MBSA Standard Courses (continued)



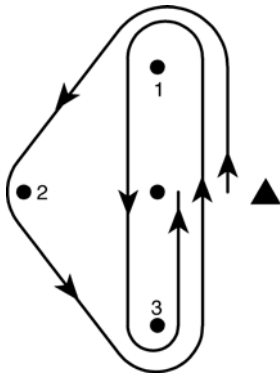
Course G

Start – Mark 1 - Mark 2 – Mark 3 –
Mark 1 - Finish



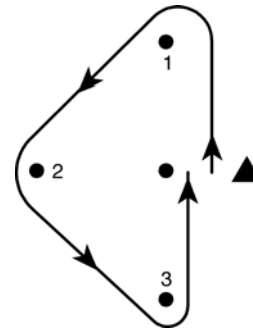
Course H

Start – Mark 1 – Leeward Mark - Finish



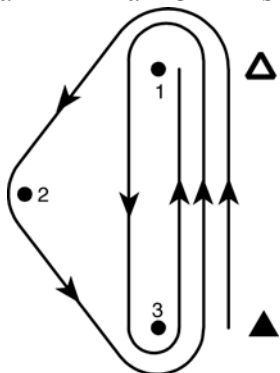
Course J

Start – Mark 1 – Mark 2 – Mark 3 –
Mark 1 - Mark 3 - Finish



Course M

Start – Mark 1 - Mark 2 – Mark 3 - Finish



Course O

Start – Mark 1 – Mark 2 – Mark 3 -
Mark 1 – Mark 3 - Finish



Offset

If used, round the Offset Mark after
rounding Mark 1 for the first rounding of
Mark 1 only. [GSI 11(C)(ii)(2)]



The Passing or Boundary Marks (Restricted Areas) contained in MBSA Standard Rounding Mark Lists A, B & C are hereby incorporated by reference and unless specified otherwise by the ESI, apply during all races run using MBSA Standard Courses.

MBSA STANDARD ROUNDING MARKS

List A: MASSACHUSETTS BAY

| <u>LETTER OR NO.</u> | <u>DESIGNATION</u> | <u>GOV'T SYMBOL</u> | <u>LIGHT CHAR</u> | <u>APPROX LAT</u> | <u>APPROX LONG</u> |
|--------------------------|--------------------------------|-------------------------|-----------------------|-----------------------|------------------------|
| A | CAPE ANN WHISTLE | R "2" | FLR 6s | 42.37.9 | 7031.2 |
| B | EASTERN POINT WHISTLE | R "2" | FLR 4s | 42.34.2 | 70.39.9 |
| C | NEWCOMB LEDGE WHISTLE | G "1" | FLG 4s | 42.30.4 | 70.44.5 |
| D | TINKER'S ROCK GONG | GR "TR | | 42.28.9 | 70.48.9 |
| E | PORTABLE WINDWARD MARK | | | | |
| F | PORTABLE START OF GYBE MARK | | | | |
| G | GREAT PIGS ROCK BELL | R "4" | FLR 4s | 42.27.6 | 70.50.5 |
| H | FLIP ROCK GONG | RG "FR" | | 42.24.2 | 70.55.5 |
| J | BOSTON APPROACH BUOY | RW "BG" | MO(A) | 42.23.4 | 70.51.5 |
| K | BOSTON LIGHTED HORN BUOY | RW "B" | MO(A) | 42.22.4 | 70.46.6 |
| L | BOSTON APPROACH BUOY | Y "BF" | FL(4)Y20s | 42.21.2 | 70.41.5 |
| M | BOSTON ENTRANCE GONG | RW "NC" | MO(A) | 42.22.5 | 70.54.3 |
| N | THE GRAVES WHISTLE | G "5" | FLG 4s | 42.22.5 | 70.51.5 |
| O | 3 ½ FATHOM LEDGE BELL | R "2" | FLR 4s | 42.21.2 | 70.50.3 |
| P | BOSTON S ENTRANCE CAN | GC "1" | | 42.21.3 | 70.53.5 |
| Q | MARTIN LEDGE NUN | RN "4" | | 42.20.7 | 70.51.2 |
| R | BOSTON LEDGE NUN | RN "6" | | 42.20.1 | 70.51.9 |
| S | THIEVES LEDGE WHISTLE | G "1" | QkFLG | 42.19.6 | 70.49.9 |
| T | HARDING LEDGE BELL | G "1HL" | FLG 4s | 42.18.6 | 70.50.7 |
| U | DAVIS LEDGE GONG | G "1DL" | FLG 2.5s | 42.18.3 | 70.44.9 |
| V | 21 FOOT WHISTLE (MINOTS LEDGE) | G "21" | FLG 4s | 42.18.6 | 70.42.4 |
| X | SCITUATE APPROACH GONG | RW "SA" | MO(A) | 42.12.1 | 70.41.9 |
| Y | HUMAROCK WHISTLE | RW "H" | MO(A) | 42.09.8 | 70.31.2 |
| Z | FARNEM ROCK BELL | R "6" | FLR 4s | 42..05.6 | 70.36.5 |

LIST B: SALEM BAY

| <u>LETTER OR NO.</u> | <u>DESIGNATION</u> | <u>GOV'T SYMBOL</u> | <u>LIGHT CHAR</u> | <u>APPROX LAT</u> | <u>APPROX LONG</u> |
|--------------------------|------------------------------------|-------------------------|-----------------------|-----------------------|------------------------|
| 1 | SALEM CHANNL NUN (GALES LEDGE) | RN "6" | | 42.32.6 | 70.45.9 |
| 2 | SALEM CHANNEL BUOY (CURTIS PONIT) | G "13" | FLG 4s | 42.32.6 | 70.50.4 |
| 3 | CAT I, CHANNEL NUN (NR HALFWAY RK) | RN "4" | | 42.30.5 | 70.46.8 |
| 4 | EAGLE I, CHANNEL CAN (POPE HEAD) | GC "5" | | 42.31.7 | 70.46.0 |
| 5 | MARBLEHEAD CHANNEL BELL | RG | FL(2+1) 8s | 42.30.2 | 70.49.1 |
| 6 | SALEM CHANNEL BUOY (BOWDITCH LG) | G "11" | FLG 4s | 42.32.5 | 70.48.6 |
| 7 | SALEM CHANNEL BELL (POWERS LG) | G "9" | QG | 42.32.4 | 70.47.3 |
| 8 | SALEM CHANNAL CAN | GC "7" | | 42.32.1 | 70.46.5 |
| 9 | SALEM CHANNEL CAN | GC "5" | | 42.31.8. | 70.45.9 |
| 10 | SALEM CHANNEL CAN | GC "3" | | 42,31.1 | 70.45.1 |

PASSING OR BOUNDARY MARKS (RESTRICTED AREAS): Yachts shall not traverse the area bounded by a line connecting the following buoys in the sequence listed: Bell G"9" (Powers Rock), Salem Channel Cans: 7, 5, & 3, Nuns 2 & 4 south of Baker's Island, Can 5 (Pope Head), Bell G"9" (Powers Rock). Yachts entering this area must leave between the same two boundary buoys that they pass while entering, unless a listed mark is a rounding mark. Yachts shall not pass to the west of Coney Ledge Can 5, to the northwest of Outer Breakers {Greet Pig Rocks} Bell R "4", or north of Shag Rock Buoy R "2" off Nahant.

MBSA STANDARD ROUNDING MARKS

List C: GREATER BOSTON/HINGHAM HARBOR

| <u>LETTER OR NO.</u> | <u>DESIGNATION</u> | <u>GOV'T SYMBOL</u> | <u>LIGHT CHAR</u> | <u>APPROX LAT N</u> | <u>APPROX LONG W</u> |
|--------------------------|---|-------------------------|-----------------------|-------------------------|--------------------------|
| 1 | Boston N. Channel Bell (Finns Ledge) | R "2" | RQ | 42'.22.2' | 70'.55.2' |
| 2 | Boston North Channel Buoy | G "5" | FLG 2.5 sec | 42'.22.4' | 70'.55.3' |
| 3 | Boston North Channel Buoy | GR "PR" | FL(2+1) G6s | 42'.20.5' | 70'.56.2' |
| 4 | President Road Anchorage Gong | Y "A" | — | 42'.20.6' | 70'.57.6' |
| 5 | President Road Anchorage Nun | YN "E" | — | 42'.20.2' | 70'.58.8' |
| 6 | Winthrop Harbor Approach | RN "4" | — | 42'.21.0' | 70'.58.7' |
| 7 | Boston Channel Buoy (Castle Island) | R "10" | FR 6sec | 42'.20.7' | 70'.00.7' |
| 8 | Boston Main Channel Buoy | R "6" | FLR 2.5 sec | 42'.20.2' | 70'.59.9' |
| 9 | Long I. Head Buoy (President Road) | G "17" | FLG 2.5sec | 42'.19.9' | 70'.57.6' |
| 10 | Sculpin Ledge Nun (Spectical I. Channel) | RN "8A" | — | 42'.18.9' | 70'.58.9' |
| 11 | Dorch Bay Nun (NW Thompson's I) | RN "4" | — | 42'.19.3' | 70'.00.8' |
| 12 | Long I. Shoal Nun (West Head) | RN "6" | — | 42'.18.4' | 70'.58.5' |
| 13 | Nantasket Roads Chan Bell (Pt. Allertont) | G "3" | FLG 4 sec | 42'.19.1' | 70'.52.5' |
| 14 | Kelly Rock Bell (The Narrows) | R "2" | — | 42'.19.2' | 70'.54.7' |
| 15 | Nantasket Roads Chan Lt. Buoy (N Hull Gut) | G "11" | FLG 2.5sec | 42'.18.7' | 70'.55.3' |
| 16 | Rainsford I. Shoal Buoy (white/orange) | W Or | — | 42'.18.6' | 70'.56.7' |
| 17 | Hull Gut Channel Buoy | G "5" | FLG 4 sec | 42'.17.6' | 70'.55.4' |
| 18 | Bumkin Island (Shoal) Buoy | G "1" | FLG 4 sec | 42'.17.4' | 70'.54.8' |
| 19 | Crow Point Flats North Nun (Bumkin) | RGN "CP" | — | 42'.16.9' | 70'.54.6' |
| 20 | Sheep I. Can (500yds SE of Sheep I.) | G "1" | — | 42'.16.6' | 70'.55.1' |
| 21 | Hingham YC "I" (Quincy YC Channel) | Orange "1" | — | 42'.16.5' | 70'.56.5' |
| 22 | Weymouth Fore River Chan, Light | "13" | QG | 42'.16.3' | 70'.55.8' |
| 23 | Western Way Lighted Buoy | RG "WW" | FL(2+1)R6s | 42'.16.6' | 70'.55.9' |
| 24 | Weymouth Fore R. Channel Lighted Buoy | G "9" | — | 42'.17.1' | 70'.55.8' |
| 25 | Western Way Buoy (Peddocks Island) | R "2" | FLR 2.5 sec | 42'.17.0' | 70'.56.6' |
| 26 | Western Way Buoy (Peddocks Island) | G "3" | FLG 2.5sec | 42'.17.1' | 70'.57.0' |
| 27 | Lynn Channel Approach Can (Nahant Rock) | C "GR" | — | 42'.24.3' | 70'.54.4' |
| 28 | Shag Rock Buoy | R "2" | FLR 4 sec | 42'.24.8' | 70'.56.2' |
| 29 | Weymouth Fore R. Channel Lighted Buoy | GC "17" | FLG 6 sec | 42'.15.7' | 70'.55.2' |
| 30 | Sheep Island Nun | R "2" | — | 42'.16.7' | 70'.55.3' |
| 31 | Nubble Channel Can 1 | GC "1" | — | 42'.19.5' | 70'.56.8' |
| 32 | Hospital Shoal Can (Rainsford Island) | GRC "HS" | — | 42'.18.7' | 70'.56.7' |
| 33 | President Road | G "15" | QG | 42'.20.7' | 70'.56.8' |
| 34 | Hingham YC "32" (300 yds W of Hull Hill) | Orange "32" | — | 42'.18.0' | 70'.54.9' |
| 35 | Hingham YC "8" (400 yds SSW of Strawberry Hill) | Orange "8" | — | 42'.17.2' | 70'.53.3' |
| 36 | Hingham YC "1" (400 yds SSW of Spinnaker I.) | Orange "1" | — | 42'.17.8' | 70'.53.9' |
| 37 | Hingham Channel Entrance Nun | RN "6" | — | 42'.16.4' | 70'.53.9' |
| 38 | Hingham YC "6" (400 yds NNE of Harry's Rk) | Orange "6" | — | 42'.17.5' | 70'.56.0' |
| 39 | Hingham YC "31" (West of Skull Head, Hull) | Orange "31" | — | 42'.17.6' | 70'.53.4' |
| HB | Hingham Bay Starting Buoy (N of Sheep I.) | Wht"HBSB" | — | 42'.17.3' | 70'.55.4' |

Additional Limitations: Yachts shall no complete passage in either direction under Long Is. Bridge nor between Castle Is. and Horn/Light "5", Deer Is. and Dear Is. Light Buoy, Deer Is. and Great Faun Day Beacon R "6A", Nixes Mate and Gallops Is., Boston Light and Little Calf Is., Graves Whistle G "5" and Graves Light GpFL(2) 12sec, Toddy Rocks Can "C9A" and Hull Shore, Rainsford Is. and Quarantine Rocks, Harry's Rock Day Beacon R "HR" and Peddock Is., three Orange Barrels marked X (100 yds N or Grape Is. And Grape Is., Grape Is. And Slate Is., Slate Is. and Hingham Shore, G "3" and Bumkin Is., Bumkin Is. and Sunset Pt.. Other government aids to navigation may be ignored unless as marks of the course.

US SAILING JUDGES & UMPIRES – Massachusetts

| <u>NAME</u> | <u>ADDRESS</u> | <u>CERTIFICATION</u> | <u>PHONE</u> |
|----------------------|---|--|------------------------------|
| John N. Field | 75 Governors Way Barnstable MA 02630 | Judge | 508-362-0366 |
| Wesley H. Durant | 247 Highland Street Berlin, Ma 01502 | Sr. Judge | 978-838-2584 978-562-7620 |
| Stephen B. Jefferies | 121 Mount Vernon Street Boston, MA 02108 | Sr. Judge | 617-742-0494 617-367-1575 |
| Francis E, Charles | 3 Ames Street Cambridge, MA 02142 | Umpire | 781-834-0210 617-253-4884 |
| Samuel W. Wakeman | 255 Atlantic Avenue Cohasset, MA 02025 | Judge | 781-422-0131 |
| Steve Rizzo | PO Box 134 Cummaquid, MA 02637 | Judge | 508-362-9806 508-646-3663 |
| Thomas Duggan | 17 Fox Run Sr. Judge East Sandwich, MA 02537 | Umpire International Umpire | 508-888-5286 508-888-6038 |
| Henry P. Killion | 35 Red Gate Lane Franklin, MA 02038 | Judge | 508-553-0867 |
| William H Collins | PO Box 554 Hingham, MA 02043 | Sr. Judge | 617-749-0373 781-749-0373 |
| John .C Dieselman | 16 Ipswich Woods Drive Ipswich, MA 01938 | Sr. Judge | 978-356-6227 |
| John A Tagliamonte | 17 Coolidge Ave Lexington, MA 02420 | Sr. Judge Umpire | 781-834-2008 |
| Charles A. Cook | 25 Brookhouse Drive Marblehead, MA 01945 | Sr. Judge Umpire International Judge International Umpire | 781-639-6768 617-439-7505 |
| Patricia A. Stadel | 7 Ferry Lane Marblehead, MA 01945 | Sr. Judge | 781-631-2642 |
| Perez DeWolf | 23 Merritt Street Marblehead, MA01945 | Judge | 781-794-0367 |
| Mary H. Pierce | 77 Holms Street Marion, MA 02738 | Sr. Judge | 508-748-0403 |

US SAILING JUDGES & UMPIRES – Massachusetts

| <u>NAME</u> | <u>ADDRESS</u> | <u>CERTIFICATION</u> | <u>PHONE</u> |
|--------------------|---|-----------------------------|------------------------------|
| Carol C. Barrow | PO Box 8 North Chatham, MA 02650 | Sr. Judge | 508-4328422 |
| James Logue | 45 Trout Brook Lane Norwell, MA 02061 | Sr. Judge | 781-659-4683 781-749-8512 |
| John D. Osmond | 2111 Oyster Harbors Osterville, MA 02655 | Judge | 508-428-2992 508-862-3515 |
| Peter T. Johns | 15 Farm Valley Road Osterville, MA 02655 | Judge | 508-420-5215 800-285-7022 |
| Susan R. Epstein | 138 East Street Sharon, MA 02067 -or - 66 Cadish Ave Hull, MA 02045 | Judge | 781-784-6949 |
| John C. Pratt | 49 Forest Street Stoneham, MA 02180 | Sr. Judge Umpire | 781-438-5948 |
| Julie Hahnke | PO Box 522 Swampscott, MA 01907 | Umpire | 781-990-1431 |

SUBMITTING APPEALS - MSBA APPEALS COMMITTEE

Appendix F of the Racing Rules of Sailing 2005 - 2008 (RRS) sets forth the appeals procedures.

Rule 65.2 of the RRS sets forth the procedure for obtaining a written copy of the protest decision.

As regards rule F.1 the Mass Bay Sailing Committee will also accept requests by a race committee for confirmation or correction of it's' decisions and/or rule interpretations.

Address appeals to: Mass Bay Sailing Appeals Committee
 C/O Melissa Verrochi
 46 Cranch Street
 Quincy, MA 02169

*It is recommended that all correspondence be sent registered mail, return receipt requested.



2008 DOUBLE HANDED SAILING

The newly formed Short-handed Sailing Association in collaboration with the Mass Bay Sailing Association invites you to join the increasing number of sailors participating in Double-handed racing

IF you can answer YES to any of these questions:

- Tired of recruiting, training and managing crew?
- Used to race, but are coming back to sailing after building a business and family?
- Like the idea of racing but don't want to get into an arms ace of equipment?
- Want to “*race*” but have a “*cruising*” boat?

THEN:

Check the MBSA calendar for a short handed race near you.

Viewed by some as the fastest growing aspect of yacht racing DH racing is a simple, easy and very cost effective way to get a racing fix in the boat you have with the gear you have.

Think about how most “cruising boats” are set up:

They almost all have: Roller furling Genoas, autopilots, Asymmetrical cruising spinnakers in socks, on deck navigation capability, reef from the cockpit mainsail systems? And Crew? Most cruising boats are operated by and large by couples, so why not get your racing fix the same way?

More and more yacht clubs are offering DH classes in their weekend events and distance races. The Block Is. Race & Vineyard Race have been doing so for 17 years. The Newport to Bermuda, Marion to Bermuda & Marblehead to Halifax races all offer DH classes, the Around Long Is. Race is introducing a DH class this year and Narragansett Bay YRA has been offering DH classes in their day races for 4 years.

The SSA and MBSA are working together to develop DH classes in races around Mass Bay. Keep a weather eye out for updates on the MBSA and SSA websites: www.massbaysailing.org and www.Short-handed.org

For more information contact:

Joe Cooper @ hoodri-sales@att.net (C) 401 965 6006, President SSA

Paul McMahon at Paul.McMahon@arm.com (C) 603 738 8034 MBSA Liaison with SSA



***U.S. Men's Sailing Championship Quarter Final
June 10, 2008***

***Host: Courageous Sailing Center, Charlestown MA
Organizing Authority: Mass Bay Sailing Association***

The event is open to eligible crews of 4 (including skipper) from yacht clubs, sailing clubs and community sailing programs belonging to Mass Bay Sailing Association (MBSA) and U.S. SAILING. To be eligible all competitors must:

- a. Have reached their 18th birthday during the 2008 calendar year.
- b. Be a member of US Sailing and Mass Bay Sailing Association, and
- c. Be a member of a US Sailing and Mass Bay Sailing Association participating Sailing Club.

(Note: Members of a crew do not have to be members of the same yacht club, club or community sailing program.)

The winner of the MBSA Quarter Finals will continue to the Area A Qualifier and have a chance to qualify for the Clifford D. Mallory Cup, the U.S. Men's Sailing Championship. in San Francisco and hosted by the San Francisco Yacht Club, September 16 -20, 2008.

***U.S. Women's Sailing Championship Quarter Final
June 10, 2008***

***Host: Courageous Sailing Center, Charlestown MA
Organizing Authority: Mass Bay Sailing Association***

The Event is open to eligible crews of 4 (including skipper) from yacht clubs, sailing clubs and community sailing programs that belong to Mass Bay Sailing Association (MBSA) and U.S. Sailing. To be eligible all competitors must:

- a. Have reached their 18th birthday during the 2008 calendar year.
- b. Be a member of US Sailing and Mass Bay Sailing Association, and
- c. Be a member of a US Sailing and Mass Bay Sailing Association participating Sailing Club.

(Note: Members of a crew do not have to be members of the same yacht club, club or community sailing program.)

The winner will continue on to the Area A Qualifier and have a chance to qualify for the Mrs. Charles Francis Adams Cup and the Mrs. Willis D. Wood Trophy and U.S. Women's Sailing Championship in Oklahoma and hosted by the Oklahoma City Boat Club, September 18-21, 2008.

For more information regarding the ladder events, please visit www.massbaysailing.org or contact Kristin Feeley at feeleyk@verizon.net. Additional information regarding the U.S. Men's and Women's Sailing Championship can be found at www.ussailing.org/Championships

***MASS BAY JUNIORS
2008 SCHEDULE***

COACHES, PARENTS KIDS:

WE WANT YOUR RACERS

SAVE THE DATE & SIGN UP



***June 20th – Friday. – SINGLEHANDED CHAMPS – CURTIS JR. CUP
MIT SAILING CENTER – 5 PM TECH'S FRAN CHARLES – 617-253-4884***

***June 21 - 22 – Sat & Sun -TRIPLEHANDED CHAMPS – GRAY CUP
COUAGOUS SAILING CENTER – J22's – DAVE DILORENZO – 617-242-3821***

***June 25th – Wednesday – DOUBLEHANDED CHAMPIONSHIP –
MIT SAILING CENTER – FJ's – 10: AM w/CLINIC – 617-253-4884***

***Aug. 11 - 13 – Mon – Wed – JUNIOR OLYMPICS – ROCKPORT
SANDY BAY YACHT CLUB – CHARLES CLARK – 978-281-5900***

One-Design Fleet Events

| <i>Class/Sponsor YC</i> | <i>Dates</i> | <i>Website</i> |
|--|--|--|
| <u>Bullseyes</u> | | |
| Cohasset Yacht Club | Wed Nights, July - Aug Saturdays, June – Aug | www.cohassetyc.org/racing.html |
| Sandy Bay Yacht Club | Weekends, May – Sept | www.sandybay.org/bullseye/index.shtml |
| <u>Cape Cod Mercury</u> | | |
| Community Boating | Sundays, April - Sept | www.community-boating.org/sr_racing.php |
| Quannapowitt Yacht Club | Weekends, April – Oct Wed Nights, May - Aug | www.sailqyc.com |
| <u>Etchells</u> | | |
| Marblehead Racing Assoc. | Weekends, May –Sept | www.mheadrace.org |
| Corinthian Yacht Club | Thursday Nights June – Aug. | www.corinthianyc.org |
| <u>Flying Scot</u> | | |
| Quannapowitt Yacht Club | Weekends, April – Oct Wed Nights, May – Aug | www.sailqyc.com |
| NE District Championship | June 28-29, | www.sandybay.org/scotsl |
| Sandy Bay Yacht Club | Weekends, May – Sept | |
| <u>Herreshoff 12 1/2</u> | | |
| Cohasset Yacht Club | Wed Nights, July - Aug Saturdays, June – Aug | www.cohassetyc.org/racing.html |
| <u>Interclub</u> | | |
| Cottage Park Yacht Club | Sundays, Nov - Dec | www.cpyc.org/frostbiting |
| <u>International 110</u> | | |
| Hull Yacht Club | , June 21-22 | www.110class.com/regatta_schedule |
| Boston Bay Challenge Cup | July 26-27, | |
| District 1 Championship | Aug 20-24, | |
| 110 National | | |
| <u>International 210</u> | | |
| Cohasset Yacht Club | Wed Nights, July - Aug Saturdays, June – Aug | www.cohassetyc.org/racing.html |
| International 210 Assoc. | Weekends, May - Sept | http://www.210class.com |
| South Boston Yacht Club | Aug 17-21, 210 Nationals | www.210nationals.com/Home.html |
| <u>International One Design</u> | | |
| Marblehead Racing Assoc. | Weekends, May –Sept | www.mheadrace.org |
| <u>J22</u> | | |
| Courageous Sailing Center | Thurs Nights, May – Aug Saturdays, Nov – March | www.courageoussailing.org/adults/races.html |
| <u>J24</u> | | |
| Beverly Yacht Club | June 26-29, J24 International Women's Open Championship | www.j24womensopenchampionship.com |
| Hingham Bay | | www.hbphrf.org |
| Jubilee Yacht Club | Thurs Nights, May – Sept | www.jubileeyc.net/Racing.html |
| Marblehead Racing Assoc. | Weekends, May –Sept | www.mheadrace.org |
| Scituate Sailing | Wed Nights, May – Sept Sundays, September | www.scituatesailing.com |

One-Design Fleet Events

| <i>Class/Sponsor YC</i> | <i>Dates</i> | <i>Website</i> |
|--|---|--|
| <u>J105</u> | | |
| Boston Yacht Club | Wed Nights, May - Sept | www.bostonyc.org |
| Jubilee Yacht Club | Thurs Nights, May – Sep | www.jubileeyc.net/Racing |
| <u>Rhodes 19</u> | | |
| Community Boating | Sundays, June – Sept | www.community-boating.org/sr_racing.php |
| Cottage Park Yacht Club | East Costs July 11- 13 Weekends, June – Sept Sundays, Nov - Dec | www.cpyc.org |
| Courageous Sailing Center | Thurs Nights, May – Aug Saturdays, Nov – March | www.courageoussailing.org/adults/races.html |
| Hingham Bay | Thurs Nights, May - Aug Weekends, June – Sept | www.hbphrf.org |
| Manchester Yacht Club | Sundays, July – Sept | www.manchesteryachtclub.org |
| Marblehead Racing Assoc. | Weekends, May –Sept | www.mheadrace.org |
| Corinthian Yacht Club | Thurs Evenings June –Aug | www.corinthianyc.org |
| New Bedford Yacht Club | Aug 20-22, Nationals | www.nbyc.com/racing/index.html |
| Sandy Bay Yacht Club | Weekends, May – Sept | www.sandybay.org/rhodes/index.shtml |
| <u>Sonar</u> | | |
| Boston Yacht Club | Wed Nights, May - Sept Sundays, Nov – April | www.bostonyc.org/Racing/WednesdayEvening.html www.bostonyc.org/Racing/SonarFrostbiting.html |
| Marblehead Racing Assoc. | Weekends, May –Sept | www.mheadrace.org |
| Scituate Sailing | Wed Nights, May – Sept | www.scituatesailing.com |
| <u>Star</u> | | |
| Cottage Park Yacht Club | Weekends, June – Aug | www.cpyc.org/star/index.html |
| Sandy Bay Yacht Club | District 1 Champ July 11-13 Weekends, May – Aug | www.sandybay.org/stars/index.shtml |
| <u>Thunderbird</u> | | |
| Savin Hill Yacht Club | Thurs Nights, June – Sept | www.savinhillyc.org |
| <u>Town Class</u> | | |
| Corinthian Yacht Club | Sundays, June – Sept Thurs Nights, June – Sept | www.townclass.net www.coninthyanc.org |
| Marblehead Racing Assoc. | Weekends, May –Sept | www.mheadrace.org |
| Nahant Dory Club | Weekends, July – Aug | www.doryclub.org/sailing |
| <u>Viper 640</u> | | |
| Boston Yacht Club | Wed Nights, May - Sept | www.bostonyc.org |
| Corinthian Yacht Club | North Americans July 26-29 | www.viper640.org/content/view/46/42/ |
| Marblehead Racing Assoc. | Weekends, May –Sept | www.mheadrace.org |
| <u>Additional One Design Regatta for various fleets –</u> | | |
| Lipton Cup | July 19-20 | www.squantumyc.org |
| NOOD Regatta at | July 24-27 | www.sailingworld.com/nood_regatta.jsp |
| At Marblehead Race Week | | |
| Buzzard Bay Regatta | Aug 1-3 | www.buzzardsbayregatta.com |

Marblehead One – Design Events

| Dates | Event | Sponsors |
|------------------|--|-----------------|
| April | | |
| 12, 13 | Jackson Cup Team Races | BYC |
| May | | |
| 17 | PHRF Starting Practice | BYC |
| 25, 26 | MRA Spring One-Design Regatta | EYC |
| 29 | Twilight Series Begins | CYC |
| 31 | MRA 1 st Series Begins | BYC/CYC/EYC |
| June | | |
| 7, 14, 21 | MRA 1 st Series | BYC/CYC/EYC |
| 7 | Women's Sailing Conference | CYC |
| 7, 8 | 505 Spring Regatta | EYC |
| 5, 12, 19, 26 | Twilight Series | CYC |
| 22 | Commodores Cup (BYC Hosting) | BYC/CYC/EYC |
| 28, 29 | MRA 2 nd Series Begins | BYC/CYC/EYC |
| July | | |
| 3,10,17, 31 | Twilight Series | CYC |
| " " | Team Racing Series | EYC |
| 5, 12, 19 | MRA 2 nd Series | BYC/CYC/EYC |
| 12, 13 | Lightening NE District Championship | CYC |
| 21 - 23 | Race Week – Junior Races | PYC |
| 24 - 27 | NOOD Regatta @ Marblehead Race Week | BYC/CYC/EYC |
| August | | |
| 2, 9, 16, | MRA 3 rd Series | BYC/CYC/EYC |
| 7, 14,21, 28 | Twilight Series / Team Racing | CYC / EYC |
| 10 | The Junior Keel Boat Regatta | CYC |
| 12 | Betty Pleasants Women's Race | EYC |
| 17 | David J. Smith Trophy – (J24) | CYC |
| 30, 31 | MRA 4 th Series Labor Day Weekend | BYC/CYC/EYC |
| September | | |
| 6, 13, 20, 27 | MRA Fall One Design Series | CYC |
| 14, 21, 28 | Ponce de Leon Dinghy Series | EYC |

2008 Mass Bay Sailing Off Shore Race Entry Form

| | | | | | |
|----------------------|-------------------------------------|-----------------------------------|---------------|------------|----------|
| _____ | _____ | _____ | _____ | _____ | _____ |
| Race Entered | Yacht Name | Sail Number | Division | Class | Rating |
| _____ | _____ | _____ | _____ | _____ | _____ |
| Skipper's First Name | Skipper's Last Name | Address | City | State | Zip Code |
| _____ | _____ | _____ | _____ | _____ | _____ |
| Telephones | Email address | Yacht design, eg C&C 35-3 | LOA | Hull Color | |
| _____ | _____ | _____ | _____ | _____ | _____ |
| Yacht Club | US Sailing Membership Number | Mass Bay Membership Number | Fleet | | |
| _____ | _____ | _____ | _____ | _____ | _____ |
| Entry Fee | less US Sailing Membership discount | less Mass Bay Membership discount | Net Entry Fee | | |

Skippr's Signature

Date

Racing division (spinnaker) are as follows: Class A=0-65, Class B=66-100, Class C=101-140, Class D=141-170, Class E =171 and up

Cruising division (non spinnaker) are as follows: Class F=0-155, Class G=156 and up

Version 020408

2008 Mass Bay Sailing Off Shore Race Entry Form

| | | | | | |
|----------------------|-------------------------------------|-----------------------------------|---------------|------------|----------|
| _____ | _____ | _____ | _____ | _____ | _____ |
| Race Entered | Yacht Name | Sail Number | Division | Class | Rating |
| _____ | _____ | _____ | _____ | _____ | _____ |
| Skipper's First Name | Skipper's Last Name | Address | City | State | Zip Code |
| _____ | _____ | _____ | _____ | _____ | _____ |
| Telephones | Email address | Yacht design, eg C&C 35-3 | LOA | Hull Color | |
| _____ | _____ | _____ | _____ | _____ | _____ |
| Skippr's Signature | Date | | | | |
| _____ | _____ | _____ | _____ | _____ | _____ |
| Yacht Club | US Sailing Membership Number | Mass Bay Membership Number | Fleet | | |
| _____ | _____ | _____ | _____ | _____ | _____ |
| Entry Fee | less US Sailing Membership discount | less Mass Bay Membership discount | Net Entry Fee | | |

Racing division (spinnaker) are as follows: Class A=0-65, Class B=66-100, Class C=101-140, Class D=141-170, Class E =171 and up

Cruising division (non spinnaker) are as follows: Class F=0-155, Class G=156 and up

Version 020408

2008 Mass Bay Sailing Off Shore Race Entry Form

| | | | | | |
|--------------|------------|-------------|----------|-------|--------|
| _____ | _____ | _____ | _____ | _____ | _____ |
| Race Entered | Yacht Name | Sail Number | Division | Class | Rating |

| | | | | | |
|----------------------|---------------------|---------|-------|-------|----------|
| _____ | _____ | _____ | _____ | _____ | _____ |
| Skipper's First Name | Skipper's Last Name | Address | City | State | Zip Code |

| | | | | |
|------------|---------------|---------------------------|-------|------------|
| _____ | _____ | _____ | _____ | _____ |
| Telephones | Email address | Yacht design, eg C&C 35-3 | LOA | Hull Color |

| | | | |
|------------|------------------------------|----------------------------|-------|
| _____ | _____ | _____ | _____ |
| Yacht Club | US Sailing Membership Number | Mass Bay Membership Number | Fleet |

| | | | |
|-----------|-------------------------------------|-----------------------------------|---------------|
| _____ | _____ | _____ | _____ |
| Entry Fee | less US Sailing Membership discount | less Mass Bay Membership discount | Net Entry Fee |

| | |
|--------------------|-------|
| _____ | _____ |
| Skippr's Signature | Date |

Racing division (spinnaker) are as follows: Class A=0-65, Class B=66-100, Class C=101-140, Class D=141-170, Class E =171 and up

Cruising division (non spinnaker) are as follows: Class F=0-155, Class G=156 and up

Version 020408

2008 Mass Bay Sailing Off Shore Race Entry Form

| | | | | | |
|--------------|------------|-------------|----------|-------|--------|
| _____ | _____ | _____ | _____ | _____ | _____ |
| Race Entered | Yacht Name | Sail Number | Division | Class | Rating |

| | | | | | |
|----------------------|---------------------|---------|-------|-------|----------|
| _____ | _____ | _____ | _____ | _____ | _____ |
| Skipper's First Name | Skipper's Last Name | Address | City | State | Zip Code |

| | | | | |
|------------|---------------|---------------------------|-------|------------|
| _____ | _____ | _____ | _____ | _____ |
| Telephones | Email address | Yacht design, eg C&C 35-3 | LOA | Hull Color |

| | | | |
|------------|------------------------------|----------------------------|-------|
| _____ | _____ | _____ | _____ |
| Yacht Club | US Sailing Membership Number | Mass Bay Membership Number | Fleet |

| | | | |
|-----------|-------------------------------------|-----------------------------------|---------------|
| _____ | _____ | _____ | _____ |
| Entry Fee | less US Sailing Membership discount | less Mass Bay Membership discount | Net Entry Fee |

| | |
|--------------------|-------|
| _____ | _____ |
| Skippr's Signature | Date |

Racing division (spinnaker) are as follows: Class A=0-65, Class B=66-100, Class C=101-140, Class D=141-170, Class E =171 and up

Cruising division (non spinnaker) are as follows: Class F=0-155, Class G=156 and up

Version 020408

MASSACHUSETTS BAY SAILING ASSOCIATION

2008 Offshore Racing Schedule

| Date | North Shore | Other | Boston/Hingham/South Shore |
|--------------------|---|--------------------------------------|---|
| Sat., May 24 | BYC Mem. Weekend Regatta (2 races) M | | |
| Sun., May 25 | | | |
| Sat., May 31 | | | |
| Sun., June 1 | EYC Lambert Ocean Race M | | |
| Sat., June 7 | | | |
| Sun., June 8 | CYC Summerset Regatta M, S, Q, J (2 races) | | |
| Sat., June 14 | | | Constitution YC Spring Regatta (2+ races) |
| Sun., June 15 | CYC Hospice of the North Shore M, Q, J | | |
| Sat., June 21 | MYC Patton Bowl Regatta M, S (2 races) | | HBPHRF Solstice Regatta H, Q |
| Sun., June 22 | | | |
| Sat., June 28 | | | BHPHRF Constitution Cup (2 races) Q, J |
| Sun. June 29 | | | |
| Fri., July 4 | EYC Annual Regatta M, S, Q, J | | |
| Sat., July 5 | | | |
| Sun., July 6 | | | |
| Fri., July 11 | Corinthian 200 - Chapman Bowl O/N Q x1.25 ¹ | | |
| Sat., July 12 | | | HBPHRF Scorpion Bowl H, Q |
| Sun., July 13 | | | |
| Fri., July 18 | BYC Beringer Bowl O/N M, Q x 1.25 ¹ | | |
| Sat., July 19 | | Crocker QP | |
| Fri., July 25 | | Race Week/NOOD | |
| Sat., July 26 | | Race Week/NOOD Downeast Challenge | Scituate Invitational Q |
| Sun., July 27 | | Race Week/NOOD | |
| Sat., August 2 | | | CPYC Make-A-Wish Regatta QP |
| Sun., August 3 | CYC Summer M | | |
| Sat., August 9 | PCYC Bowditch Race M, S, Q | Flip Flop Regatta QP | |
| Sun. August 10 | | | |
| Sat., August 16 | | | HYC Hitchcock Trophy Regatta H, Q |
| Sun., August 17 | EYC Chandler Hovey Race M | | |
| Fri., August 22 | PHRF NE ² (racing divisions below 141) | | |
| Sat. August 23 | PHRF NE ² (racing & cruising) | | |
| Sun., August 24 | PHRF NE ² (racing & cruising) | | |
| Sat., August 30 | | | CPYC JFK Regatta (2 races) Q |
| Sun., August 31 | | | |
| Mon., Sept. 1 | BYC "Wednesday's Child" Regatta QP | | |
| Sat., Sept. 6 | JYC Regatta (2 races) M, S, Q, J | | Hull YC Great Chase Race QP |
| Sun., Sept. 7 | | | |
| Sat., Sept. 13 | BYC Hodder Regatta M, S | | Constitution YC Fall Regatta (2+ races) |
| Sun., Sept. 14 | | | |
| Sat., Sept. 20 | | | HBPHRF Chowder Cup (2 races) H, Q |
| Sun., Sept. 21 | MYC Fall Series (2 races) M, Q, J | | |
| Sat., Sept. 27 | | BH Islands Reg. QP | |
| Sun., Sept. 28 | JYC Phil Small Race M, Q | | |
| Sat., October 4 | BYC Fall Regatta M (2 races) | | |
| Sat. Nov. 22 | Mass Bay Sailing Annual Awards Dinner | | |
| Thur., Jan. 1, '08 | Constitution Yacht Club New Year's Day Race – Inner Boston Harbor | | |

M=Marblehead S=Salem Bay Q=MBSA Qualifier J=MBSA J105 Qualifier QP=MBSA Pursuit Qualifier H=Hingham Bay

¹While both overnight races are Qualifiers, the multiplier of 1.25 will only be applied to the higher score.

²The PHRF NE Championship is a qualifier for all classes. It is also an event in the Hingham Bay PHRF Governor's Cup.



ATTENTION SKIPPERS AND CREW

Compete with your fleet to represent Mass Bay and Area A for the



U. S. Offshore Championship Lloyd Phoenix Trophy

September 26 -28, 2008

Any skipper and crew interested in competing for selection as the US Sailing Area A representative to compete at Columbia Yacht Club, Chicago, IL in the U. S. Offshore Championship in Tartan 10's from September 26 -28, 2008, please send a statement of interest no later than July 1, 2008 to Ken Adam, One Oak Ridge Road, Littleton, MA 01460, kenadam@prodigy.net & Tom Anderson, 65 Jersey Street, Marblehead, MA 01945, tom@nonpareilracing.com Details on the event can be found at www.ussailing.org/championships/adult/usoffshore.



Karma
Beneteau 36.7

Powered by Local Knowledge

The kind of local knowledge found only at your local Doyle Sailmakers loft. There's no one better than your local Doyle sailmaker at getting your program on track and up to speed. Ready for fast sails and a tuning setup that's right for your boat and local conditions? Contact us today!

Doyle Sailmakers Inc.

Chris Howes
96 Swampscott Road
Salem, MA 01970
T: 978-740-5950
F: 978-740-5959
E: chowes@doylesails.com

Doyle Buzzards Bay

Bill & Doug Ribar
278 Elm Street
South Dartmouth, MA 02748
T: 508-992-6322
F: 508-990-2858
E: bribar@doylesails.com

doylesails.com

800-94-DOYLE

BETTER ENGINEERED SAILS